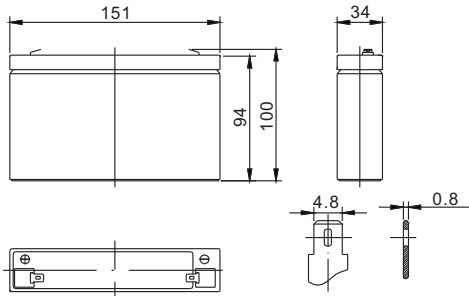


# Standard Series FP665 6V6.5Ah

**FirstPower®**

## Dimension



T1  
Terminal



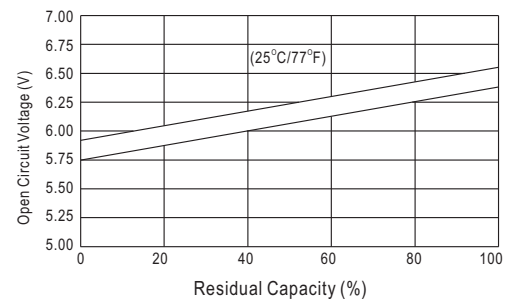
## Specification

|                      |              |                  |
|----------------------|--------------|------------------|
| Nominal Voltage      |              | 6 V              |
| Capacity(20HR, 25°C) |              | 6.5Ah            |
| Dimension            | Length       | 151mm (5.94inch) |
|                      | Width        | 34mm (1.34inch)  |
|                      | Height       | 94mm (3.70inch)  |
|                      | Total Height | 100mm (3.94inch) |
| Approx. Weight       |              | 1.08kg (2.38lbs) |

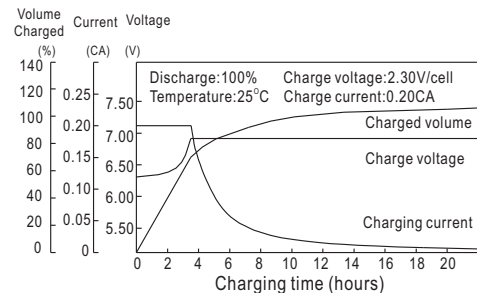
## Characteristics

|                                          |              |                         |
|------------------------------------------|--------------|-------------------------|
| Capacity 20°C<br>(68°F) To<br>1.70V/Cell | 20 hour rate | 6.5Ah                   |
|                                          | 10 hour rate | 6.0Ah                   |
|                                          | 5 hour rate  | 5.5Ah                   |
|                                          | 1 hour rate  | 4.06Ah                  |
|                                          | 15 min rate  | 2.98Ah                  |
| Internal resistance(Fully charged, 25°C) |              | Approx. 17m Ω           |
| Capacity affected by temperature (20HR)  | 40°C         | 102%                    |
|                                          | 25°C         | 100%                    |
|                                          | 0°C          | 85%                     |
|                                          | -15°C        | 65%                     |
| Self-discharge (25°C)                    | 3 month      | Remaining Capacity: 91% |
|                                          | 6 month      | Remaining Capacity: 82% |
|                                          | 12 month     | Remaining Capacity: 65% |
| Nominal operating temperature            |              | 25°C ±3°C(77°F ±5°F)    |
| Operating temperature range              |              | -15°C~50°C(5°F~122°F)   |
| Float charging voltage(25°C)             |              | 6.80 to 6.90V           |
| Cyclic charging voltage(25°C)            |              | 7.25 to 7.45V           |
| Maximum charging current                 |              | 1.95A                   |
| Terminal material                        |              | Copper                  |
| Maximum discharge current                |              | 97.5A(5 sec.)           |

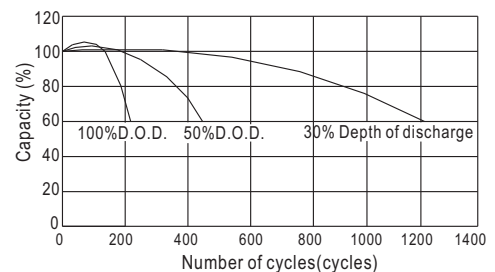
## The Relationship for Open Circuit Voltage and Residual Capacity (25°C)



## Charging Characteristics(25°C)



## Cycle Life(25°C)



## Constant Current Discharge Characteristics (A, 25°C)

| F.V/TIME | 5min | 10min | 15min | 30min | 60min | 3h   | 5h   | 10h  | 20h  |
|----------|------|-------|-------|-------|-------|------|------|------|------|
| 4.80V    | 24.7 | 15.6  | 12.4  | 7.15  | 4.23  | 1.65 | 1.12 | 0.61 | 0.33 |
| 5.10V    | 23.5 | 14.8  | 11.9  | 6.86  | 4.06  | 1.63 | 1.11 | 0.60 | 0.33 |
| 5.40V    | 22.1 | 13.9  | 11.3  | 6.52  | 3.85  | 1.59 | 1.08 | 0.60 | 0.33 |

## Constant Power Discharge Characteristics (Watt, 25°C)

|     | 5min | 10min | 15min | 30min | 60min | 3h   | 5h   | 10h  | 20h |
|-----|------|-------|-------|-------|-------|------|------|------|-----|
| 138 | 88.0 | 70.4  | 41.0  | 24.5  | 9.80  | 6.70 | 3.64 | 1.98 |     |
| 131 | 83.6 | 67.6  | 39.3  | 23.5  | 9.65  | 6.60 | 3.61 | 1.96 |     |
| 123 | 78.6 | 64.2  | 37.4  | 22.3  | 9.46  | 6.46 | 3.61 | 1.95 |     |