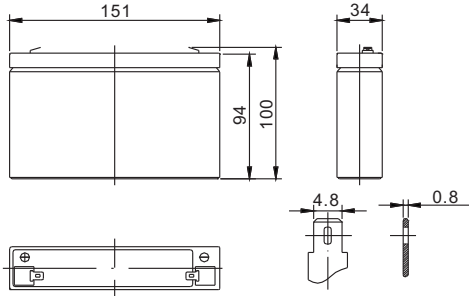


Standard Series FP685 6V8.5Ah

FirstPower®

Dimension



T1
Terminal



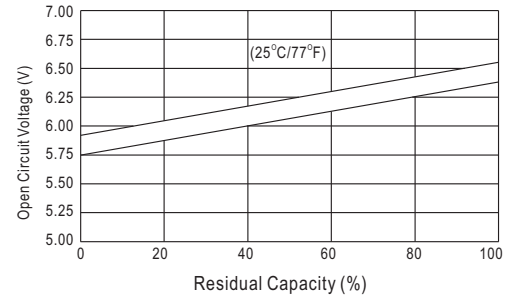
Specification

Nominal Voltage	6 V	
Capacity(20HR, 25°C)	8.5 Ah	
Dimension	Length	151mm (5.94inch)
	Width	34mm (1.34inch)
	Height	94mm (3.70inch)
	Total Height	100mm (3.94inch)
Approx. Weight	1.35kg (3.0lbs)	

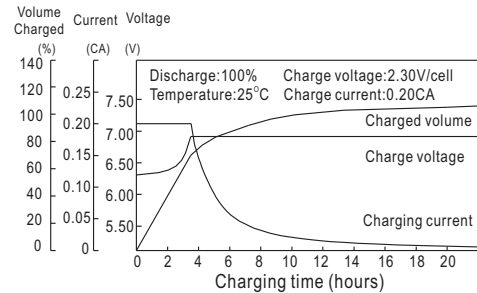
Characteristics

Capacity 20°C (68□) To 1.70V/Cell	20 hour rate	8.5Ah
	10 hour rate	7.9Ah
	5 hour rate	7.0Ah
	1 hour rate	5.3Ah
	15 min rate	3.88Ah
Internal resistance(Fully charged, 25°C)	Approx. 13m Ω	
Capacity affected by temperature (20HR)	40°C	102%
	25°C	100%
	0°C	85%
	-15°C	65%
Self-discharge (25°C)	3 month	Remaining Capacity: 91%
	6 month	Remaining Capacity: 82%
	12 month	Remaining Capacity: 65%
Nominal operating temperature	25°C ±3°C(77°F ±5°F)	
Operating temperature range	-15°C~50°C(5°F~122°F)	
Float charging voltage(25°C)	6.80 to 6.90V	
Cyclic charging voltage(25°C)	7.25 to 7.45V	
Maximum charging current	2.55A	
Terminal material	Copper	
Maximum discharge current	127A(5 Sec.)	

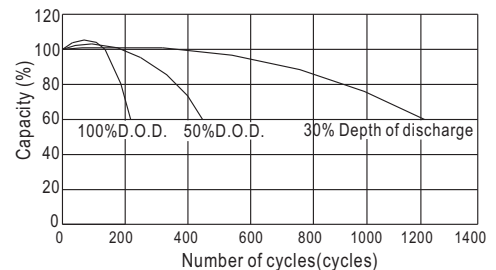
The Relationship for Open Circuit Voltage and Residual Capacity (25°C)



Charging Characteristics(25°C)



Cycle Life(25°C)



Constant Current Discharge Characteristics (A, 25°C)

F.V/TIME	5min	10min	15min	30min	60min	3h	5h	10h	20h
4.80V	32.3	20.4	16.2	9.35	5.53	2.16	1.47	0.79	0.43
5.10V	30.7	19.4	15.5	8.98	5.30	2.13	1.45	0.79	0.43
5.40V	28.8	18.2	14.7	8.53	5.04	2.08	1.42	0.78	0.43

Constant Power Discharge Characteristics (Watt, 25°C)

	5min	10min	15min	30min	60min	3h	5h	10h	20h
180	115	92.1	53.6	32.0	12.8	8.76	4.76	2.59	
171	109	88.4	51.4	30.7	12.6	8.63	4.72	2.57	
161	103	84.0	48.9	29.2	12.4	8.45	4.72	2.55	