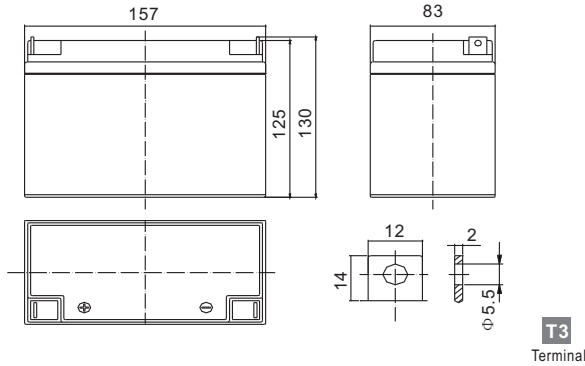


# Standard Series FP6200 6V20Ah

**FirstPower®**

## Dimension



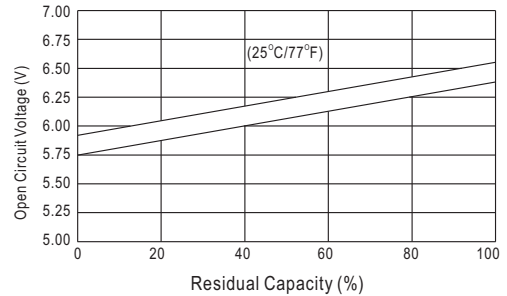
## Specification

Nominal Voltage		6 V
Capacity(20HR, 25°C)		20Ah
Dimension	Length	157mm (6.18inch)
	Width	83mm (3.27inch)
	Height	125mm (4.92inch)
	Total Height	130mm (5.12inch)
Approx. Weight		3.6kg (7.94lbs)

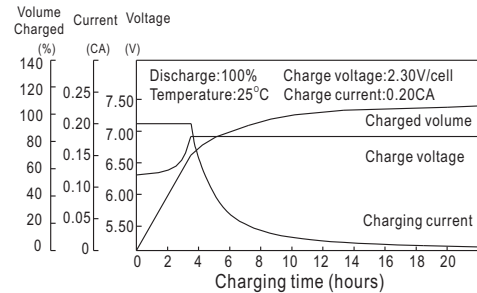
## Characteristics

Capacity 20°C (68°F) To 1.70V/Cell	20 hour rate	20Ah
	10 hour rate	18.5Ah
	5 hour rate	17.0Ah
	1 hour rate	12.5Ah
	15 min rate	9.13
Internal resistance(Fully charged, 25°C)		Approx. 9mΩ
Capacity affected by temperature (20HR)	40°C	102%
	25°C	100%
	0°C	85%
	-15°C	65%
Self-discharge (25°C)	3 month	Remaining Capacity: 91%
	6 month	Remaining Capacity: 82%
	12 month	Remaining Capacity: 65%
Nominal operating temperature		25°C ±3°C(77°F ±5°F)
Operating temperature range		-15°C~50°C(5°F~122°F)
Float charging voltage(25°C)		6.80 to 6.90V
Cyclic charging voltage(25°C)		7.25 to 7.45V
Maximum charging current		6A
Terminal material		Copper
Maximum discharge current		300A(5 Sec.)

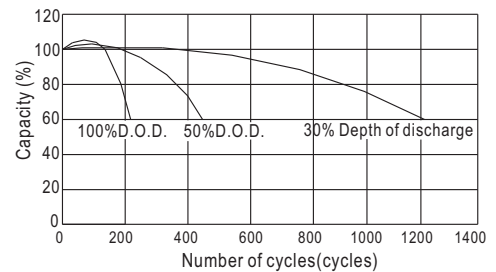
## The Relationship for Open Circuit Voltage and Residual Capacity (25°C)



## Charging Characteristics(25°C)



## Cycle Life(25°C)



## Constant Current Discharge Characteristics (A, 25°C)

F.V/TIME	5min	10min	15min	30min	60min	3h	5h	10h	20h
4.80V	76.0	48.0	38.0	22.0	13.0	5.08	3.45	1.87	1.02
5.10V	72.2	45.6	36.5	21.1	12.5	5.00	3.40	1.85	1.01
5.40V	67.9	42.9	34.7	20.1	11.9	4.90	3.33	1.84	1.00

## Constant Power Discharge Characteristics (Watt, 25°C)

5min	10min	15min	30min	60min	3h	5h	10h	20h
424	271	217	126	75.3	30.1	20.6	11.2	6.09
403	257	208	121	72.3	29.7	20.3	11.1	6.04
379	242	198	115	68.6	29.1	19.9	11.1	6.00