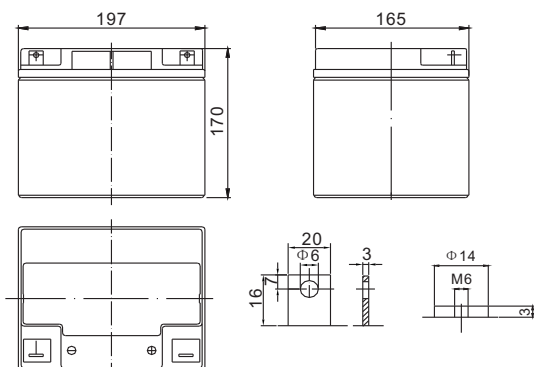


Long Life Series

LFP1240L 12V40Ah

FirstPower®

Dimension(mm)



T4 T9
Terminal



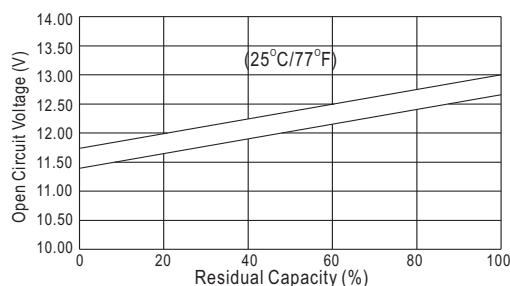
Specification

Nominal Voltage		12 V
Capacity(10HR, 25°C)		40Ah
Dimension	Length	197mm (7.8inch)
	Width	165mm (6.5inch)
	Height	170mm (6.7inch)
	Total Height(T4/T9)	170mm (6.7inch)/170mm (6.7inch)
Approx. Weight		13.8kg (30.5lbs)

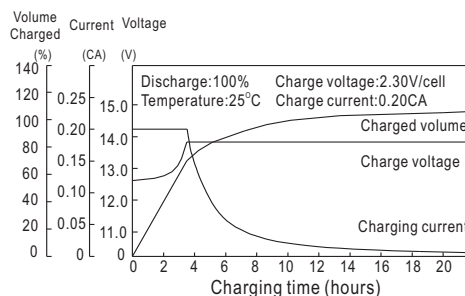
Characteristics

Capacity 20°C (68□) To 1.70V/Cell	20 hour rate	42Ah
	10 hour rate	40Ah
	5 hour rate	36Ah
	1 hour rate	25Ah
	15 min rate	15.8Ah
Internal resistance(Fully charged, 25°C)		Approx.9.5mΩ
Capacity affected by temperature (10HR)	40°C	102%
	25°C	100%
	0°C	85%
	-15°C	65%
Self-discharge (25°C)	3 month	Remaining Capacity: 91%
	6 month	Remaining Capacity: 82%
	12 month	Remaining Capacity: 65%
Nominal operating temperature		25°C ±3°C(77°F ±5°F)
Operating temperature range		-15°C~50°C(5°F~122°F)
Float charging voltage(25°C)		13.50 to 13.80V
Cyclic charging voltage(25°C)		14.50 to 14.90V
Maximum charging current		12A
Terminal material		Copper
Maximum discharge current		400A(5 sec.)

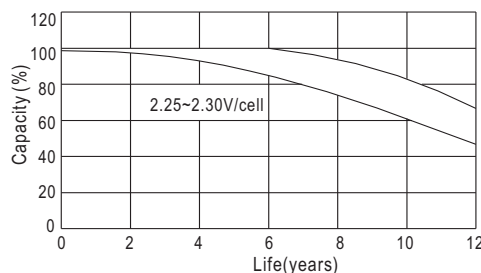
The Relationship for Open Circuit Voltage and Residual Capacity (25°C)



Charging Characteristics(25°C)



Floating Life Characteristics (25°C)



Constant Current Discharge Characteristics (A, 25°C)

F.V/TIME	5min	10min	15min	30min	60min	3h	5h	10h	20h
9.60V	118	78.6	66.0	38.8	26.0	10.4	7.31	4.06	2.10
10.2V	112	74.6	63.3	37.2	25.0	10.2	7.20	4.02	2.10
10.8V	106	70.2	60.2	35.4	23.7	10.0	7.06	4.00	2.05

Constant Power Discharge Characteristics (Watt, 25°C)

5min	10min	15min	30min	60min	3h	5h	10h	20h
1243	849	724	435	296	122	86.4	48.5	25.2
1180	806	695	418	285	120	85.1	48.0	25.2
1110	758	661	397	270	118	83.4	48.0	24.6