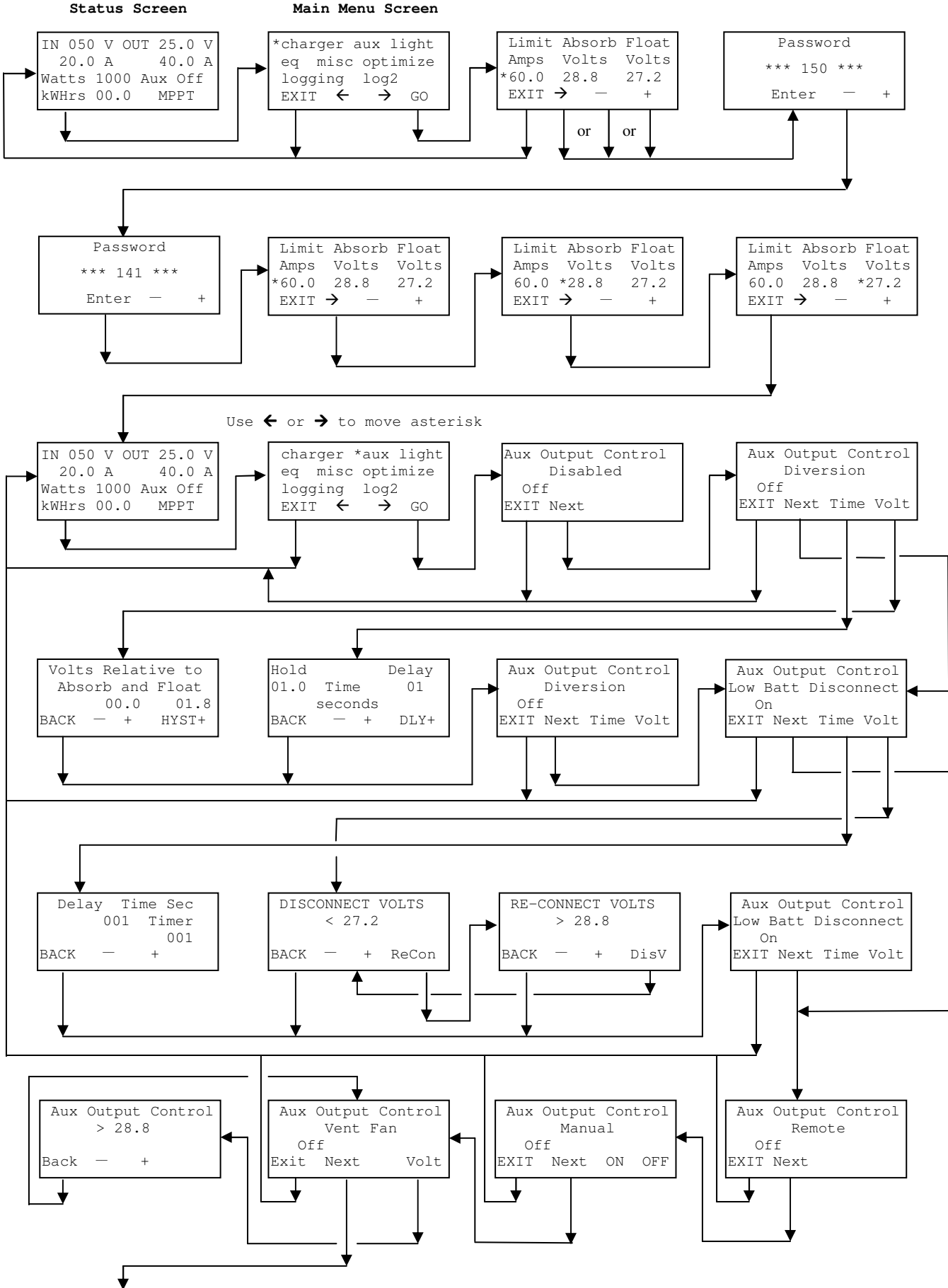
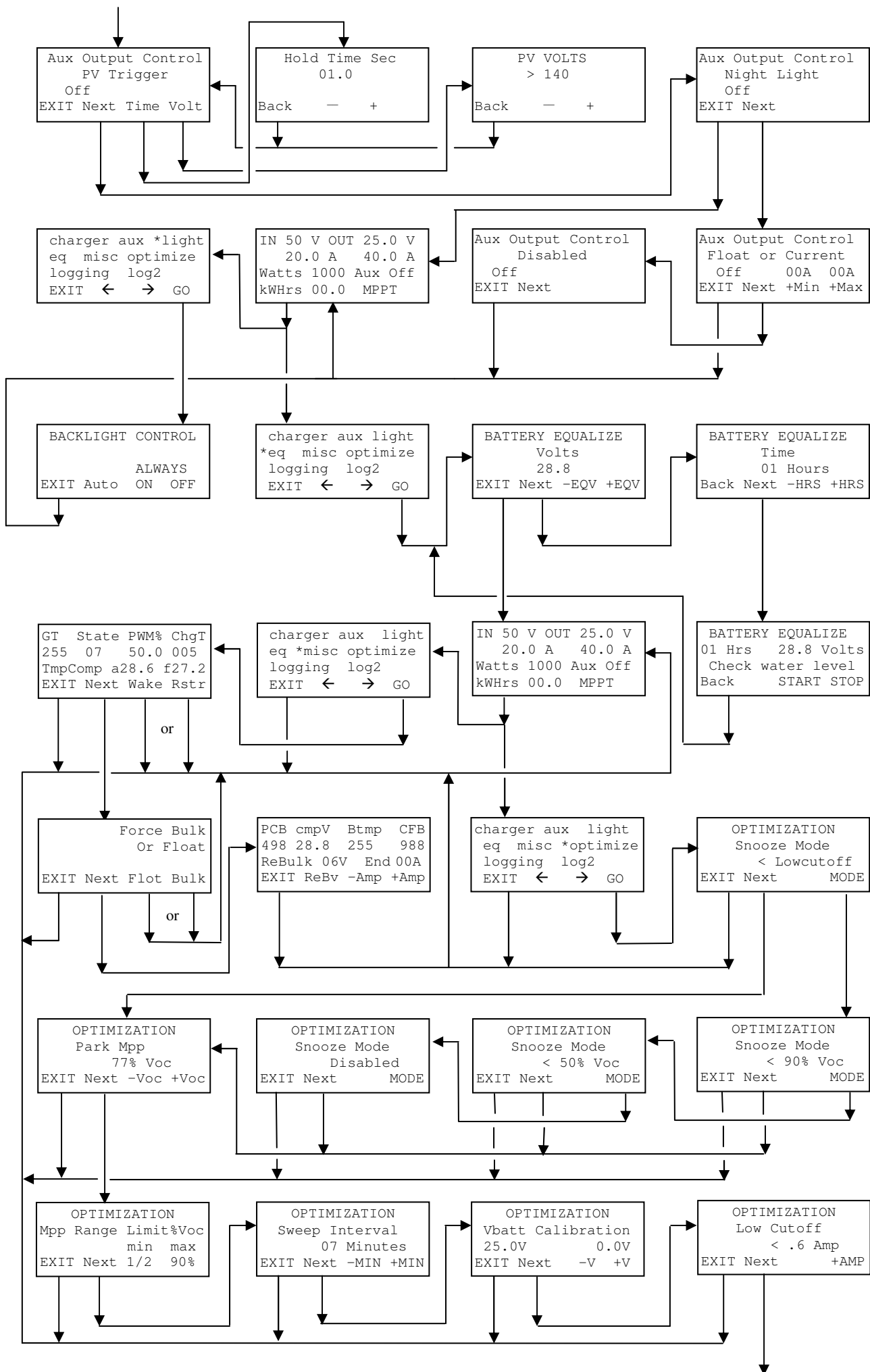
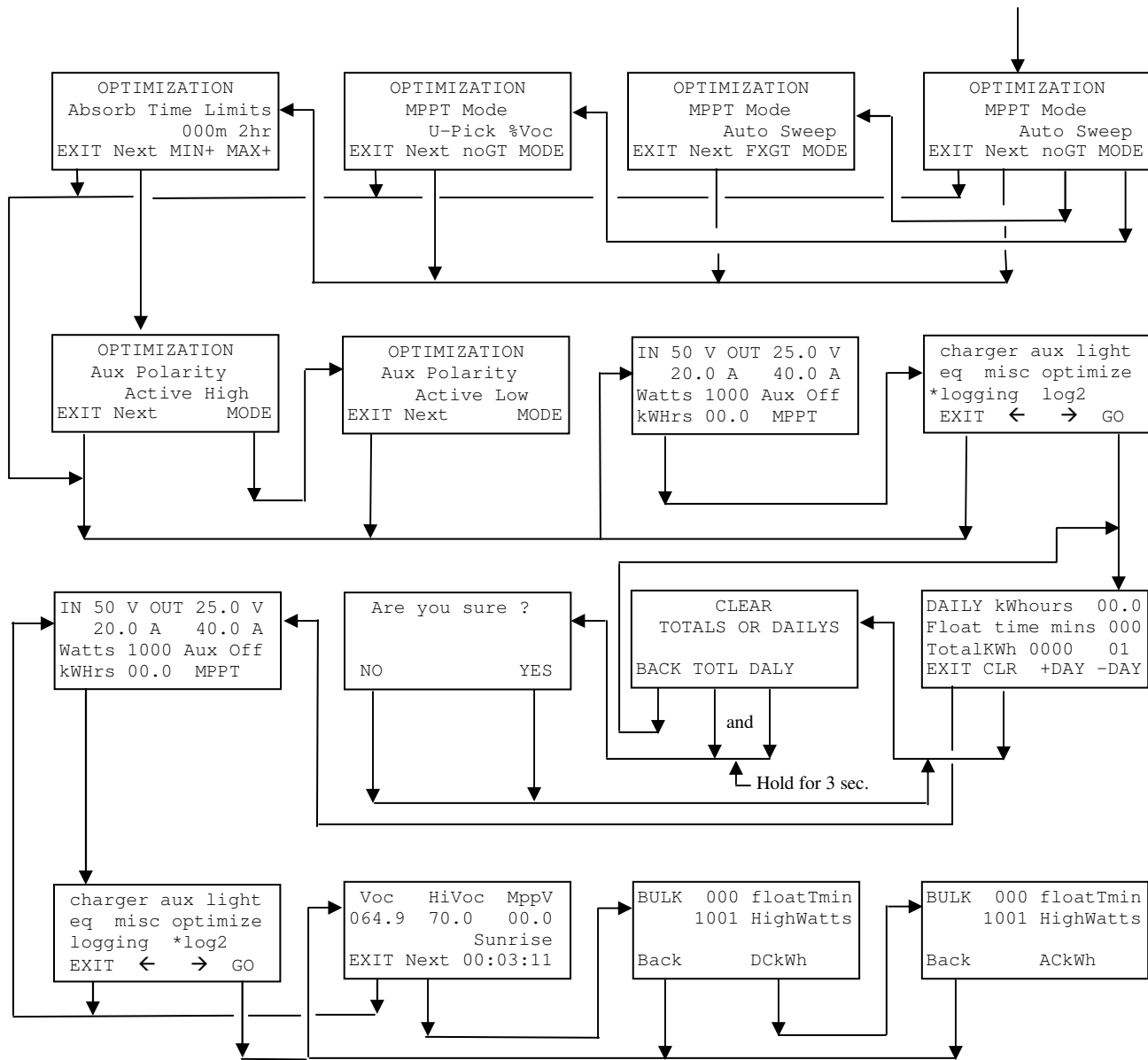


MX60 PV MPPT Charge Controller Menu Map

Menu Map subject to changes with software revision without notification







End Of Menu Map

Software Revision changes for v1.16.5.1 & v1.17.5.1

"misc" menu - display "WAKE" is replaced with WIDE/LMIT menu selection.

"misc" menu - display GMR is replaced with CFB (current feedback measurement)

"Aux Output Control" menu - menu option "Low Batt Disconnect" is also used to set battery temperature compensated charging limits.

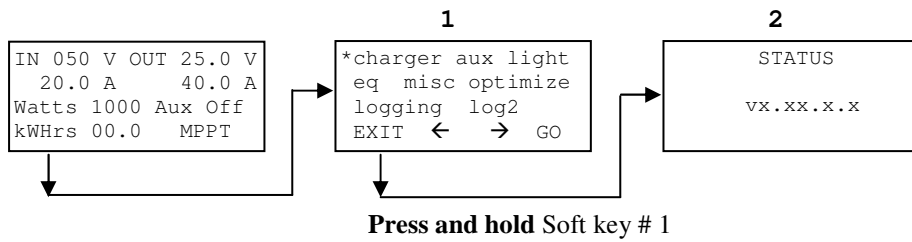
"eq" menu - menu option "AUTO" is added to the eq selection menu.

"Log2" menu - "LMIT" battery temperature charging limits set points are displayed here.

"Aux Output Control" menu - menu option "Disabled" is replaced with "Error Alarm". The new default menu is "Manual Off".

"misc" menu - display cmpV is replaced with "Err" counter.

How to determine the **Software Revision**

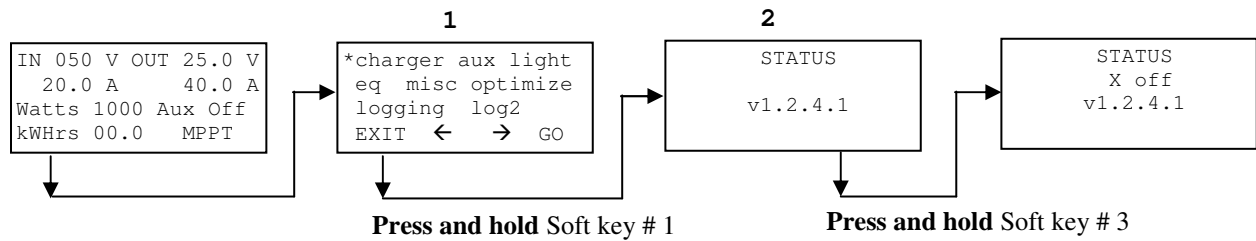


Notes:

- 1 When in the Main Menu the position of the asterisk is irrelevant
- 2 Release Soft key #1 to return to the Status .

End Of Software Revision Check

How to **Disable/Enable** Extended Play Mode

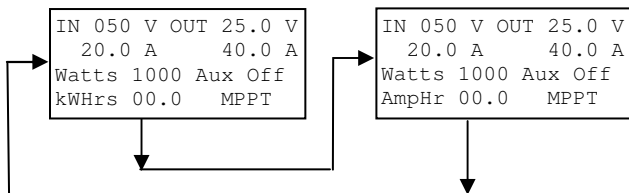


Notes:

- 1 When in the Main Menu Screen the position of the asterisk is irrelevant
- 2 When in the Status screen, while still holding down Soft key # 1, simultaneously press and hold Soft key # 3 to switch between "X off" and "X on". Release **both** Soft keys simultaneously to return to the Status screen.

End Of Extended Play Disable/Enable Mode

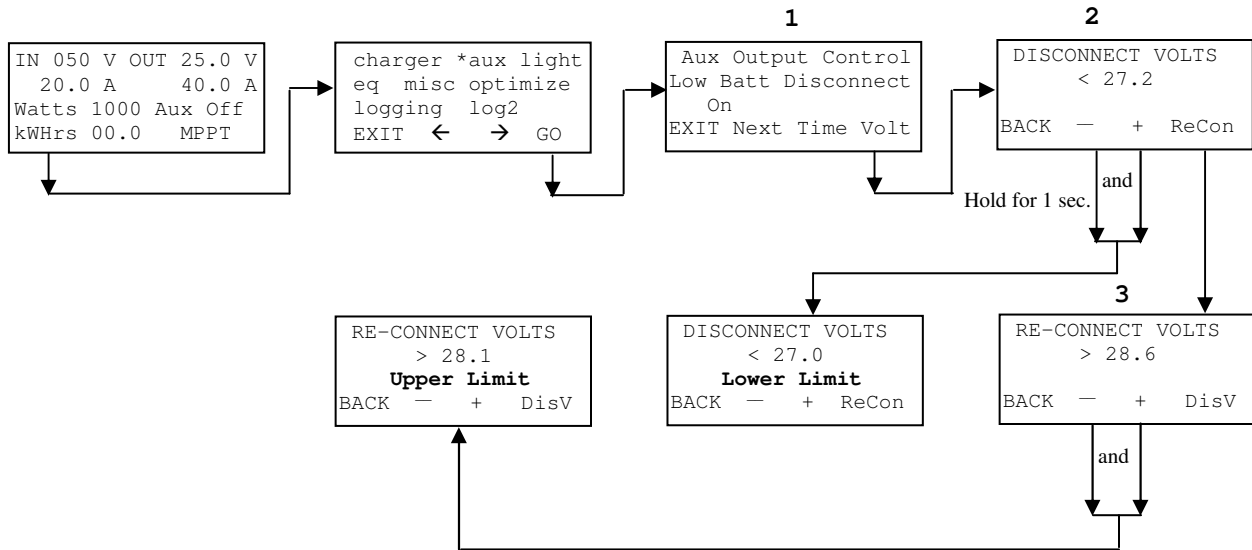
How to interchange between KWHrs and AmpHr



End Of Kwhrs/AmpHr Interchange Mode

ADDENDUM: Additional Menu Map features for Software Revision v1.16.5.1 and greater

How to set the battery temperature compensated **Lower and/or Upper** charging limit

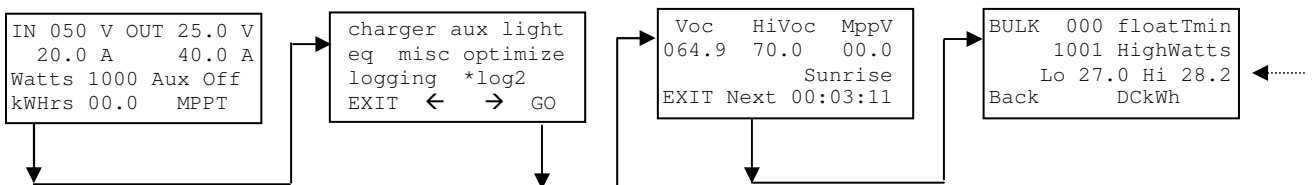


Notes:

- 1 The default Auxiliary Output Control option is Manual. Scroll through the menus until Low Batt Disconect menu is displayed.
- 2 In the DISCONNECT VOLTS menu, adjust the desired lower limit voltage by pressing - or +, then simultaneously press - **and** + to set the desired lower limit voltage.
- 3 Press ReCon in screen 2 to enter the RE-CONNECT VOLTS menu screen to set the upper limit voltage. Adjust the desired upper limit voltage by pressing - or +, then simultaneously press - **and** + to set the desired upper limit voltage.

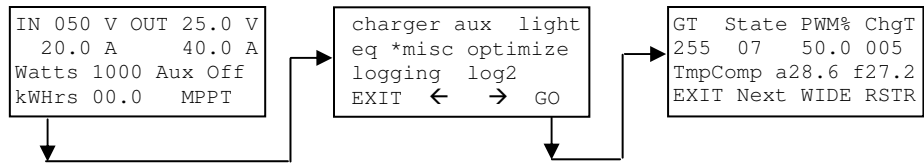
End Of Battery Temperature Compensated Lower/Upper Charging Limit

Where to view the user selected battery temperature compensated charging limits



End Of User Selected Battery Temperature Compensated Charging Mode

How to initiate a WIDE/LMIT battery temperature compensated charging mode



Notes:

- 1 The defau

How to initiate an AUTO Equalize charging mode