

Specification

Nominal Voltage	2V	
Nominal Capacity(10HR)	130.0AH	
Dimension	Length	170±2mm (6.69 inches)
	Width	98±2mm (3.86 inches)
	Container Height	205±2mm (8.07 inches)
	Total Height (with Terminal)	212±2mm (8.35 inches)
Approx Weight	Approx 8.0 kg (17.6lbs)	
Terminal	T7	
Container Material	ABS	
Rated Capacity	136.6 AH/6.83A	(20hr, 1.80V/cell, 25°C/77°F)
	130.0 AH/13.0A	(10hr, 1.80V/cell, 25°C/77°F)
	111.0 AH/22.2A	(5hr, 1.75V/cell, 25°C/77°F)
	97.5 AH/32.5A	(3hr, 1.75V/cell, 25°C/77°F)
	78.0 AH/78.0A	(1hr, 1.60V/cell, 25°C/77°F)
Max. Discharge Current	1040A (5s)	
Internal Resistance	Approx 1.2mΩ	
Operating Temp. Range	Discharge	-15~50°C (5~122°F)
	Charge	0~40°C (32~104°F)
	Storage	-15~40°C (5~104°F)
Nominal Operating Temp. Range	25±3°C (77±5°F)	
Cycle Use	Initial Charging Current less than 39.0A. Voltage	
	2.4V~2.5V at 25°C(77°F)Temp. Coefficient -5mV/°C	
Standby Use	No limit on Initial Charging Current Voltage	
	2.25V~2.3V at 25°C(77°F)Temp. Coefficient -3mV/°C	
Capacity affected by Temperature	40°C (104°F)	103%
	25°C (77°F)	100%
	0°C (32°F)	86%
Self Discharge	Leoch LP series batteries may be stored for up to 6 months at 25°C(77°F) and then a freshening charge is required. For higher temperatures the time interval will be shorter.	



Applications

- ◆ Tele-communication central station (wired or cellular)
- ◆ Power system communication, military communication, etc.
- ◆ Network communication including: data transmission, television signal transmission, etc.
- ◆ Uninterruptable Power System (UPS- for Telecom)



Constant Current Discharge (Amperes) at 25 °C (77°F)

F.V/Time	5min	10min	15min	20min	30min	45min	1h	2h	3h	4h	5h	6h	8h	10h	20h
1.85V/cell	151.7	133.6	117.5	104.0	86.9	70.6	57.6	38.6	29.5	23.8	20.4	17.9	14.5	12.4	6.58
1.80V/cell	184.6	156.4	133.9	116.6	95.5	75.9	61.4	40.6	32.0	24.6	21.2	18.7	15.2	13.0	6.83
1.75V/cell	215.8	179.2	151.4	129.2	103.9	82.2	66.0	43.1	32.5	26.0	22.2	19.6	15.6	13.3	6.91
1.70V/cell	246.9	202.6	167.4	142.0	112.9	87.8	69.9	45.5	33.9	27.0	23.1	20.3	16.1	13.6	7.06
1.65V/cell	265.1	216.6	178.1	150.1	118.3	91.2	72.6	47.0	35.0	27.9	23.8	20.6	16.4	13.8	7.18
1.60V/cell	307.4	245.3	200.2	167.4	129.4	98.7	78.0	49.3	36.5	29.0	24.9	21.5	17.0	14.2	7.40

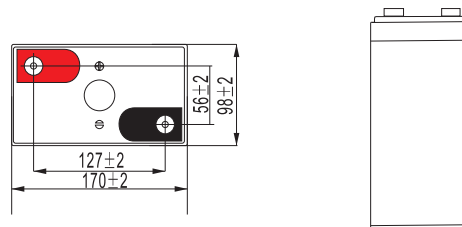
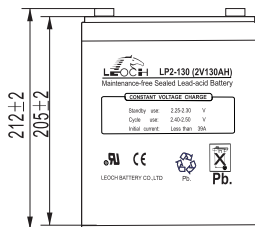
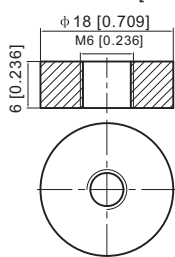
Constant Power Discharge (Watts) at 25 °C (77°F)

F.V/Time	5min	10min	15min	20min	30min	45min	1h	2h	3h	4h	5h	6h	8h	10h	20h
1.85V/cell	278.8	248.2	220.4	197.1	166.5	136.4	111.7	75.4	57.8	46.8	40.1	35.4	28.8	24.7	13.1
1.80V/cell	335.8	287.0	247.8	217.6	180.2	145.5	118.4	78.8	62.3	48.1	41.6	36.8	30.1	25.8	13.6
1.75V/cell	384.1	323.7	276.9	238.9	194.4	156.0	126.8	83.3	63.1	50.6	43.5	38.4	30.8	26.3	13.7
1.70V/cell	427.5	357.6	301.8	260.7	210.0	166.1	133.8	87.7	65.7	52.6	45.1	39.7	31.8	26.9	14.0
1.65V/cell	452.5	378.9	318.6	273.5	218.3	171.1	138.0	90.1	67.5	54.0	46.2	40.3	32.3	27.3	14.2
1.60V/cell	512.7	419.4	352.3	301.7	237.1	184.0	147.4	94.1	70.1	56.0	48.2	41.9	33.4	28.1	14.6

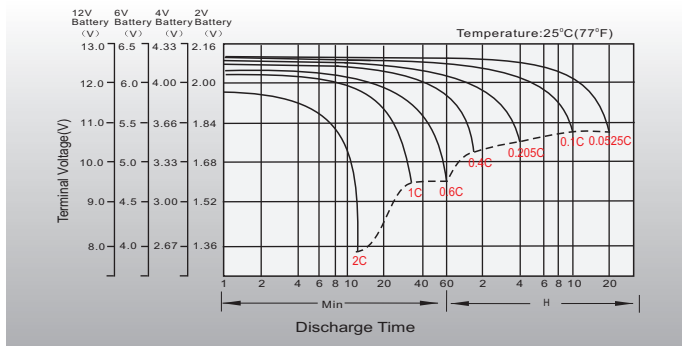
Dimensions

T7 Terminal

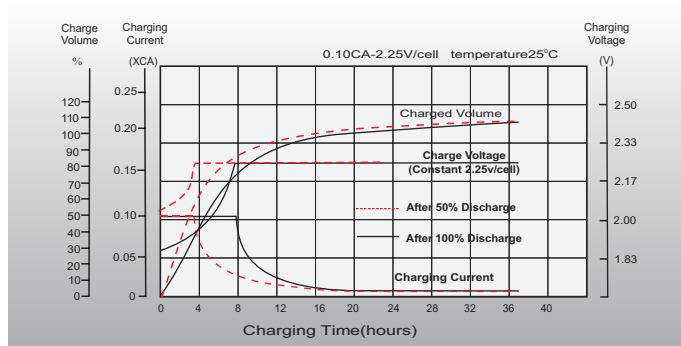
Unit: mm [inches]



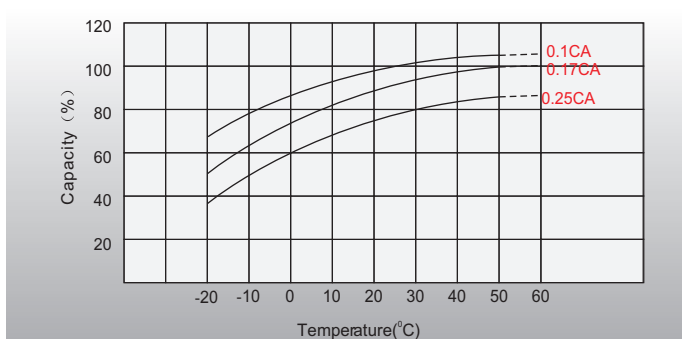
Discharge Characteristics



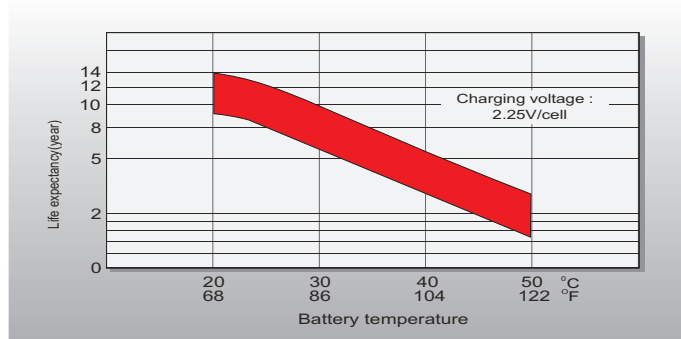
Float Charging Characteristics



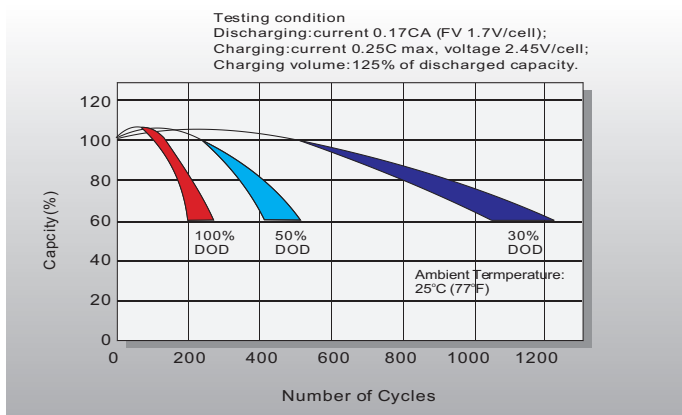
Temperature Effects in Relation to Battery Capacity



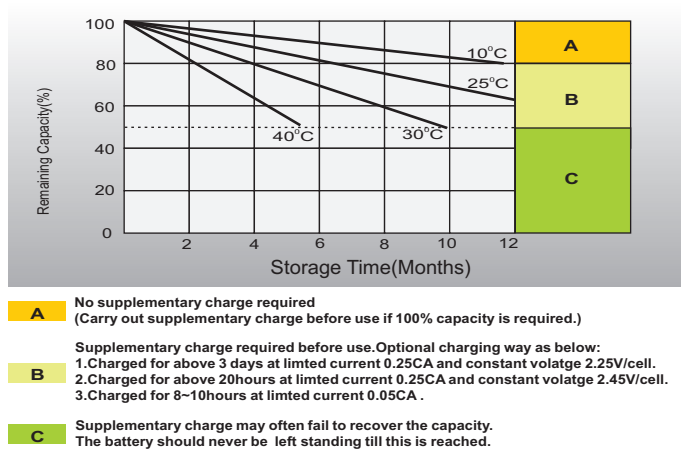
Effect of Temperature on Long Term Float Life



Cycle Life in Relation to Depth of Discharge



Self Discharge Characteristics



Sales Office

China sales office:

Add: 5th Floor, Xinbaohui Bldg., Nanhai Blvd.,
Nanshan, Shenzhen, China. 518052
Tel: +86-755-86036060 (100 lines)
Fax: +86-755-26067269
E-mail: export@leoch.com
Http://www.leoch.com

North America sales office:

Add: 19751 Descartes, Unit A,
Foothill Ranch, CA 92610, USA
Tel: 949-588-5853
Fax: 949-588-5966
E-mail: sales@leoch.us
Http://www.leoch.us

Europe sales office:

Add: La Campagna House, Main Road,
Gloucester, GL2-8JH, United Kingdom
Tel: +44(0) 1452 751016
E-mail: Sales.Europe@leoch.com
Http://www.leoch.com