

Specification

Nominal Voltage	2V	
Nominal Capacity(10HR)	170.0AH	
Dimension	Length	173±2mm (6.81 inches)
	Width	85±2mm (3.35 inches)
	Container Height	353±2mm (13.90 inches)
	Total Height (with Terminal)	364±2mm (14.33 inches)
Approx Weight	Approx 12.3 kg (27.12lbs)	
Terminal	T11	
Container Material	ABS	
Rated Capacity	181.3 AH/9.065A	(20hr, 1.80V/cell, 25°C/77°F)
	170.0 AH/17.00A	(10hr, 1.75V/cell, 25°C/77°F)
	146.2 AH/29.24A	(5hr, 1.75V/cell, 25°C/77°F)
	127.2 AH/42.4A	(3hr, 1.75V/cell, 25°C/77°F)
	99.7 AH/99.7A	(1hr, 1.67V/cell, 25°C/77°F)
Max. Discharge Current	1190A (5s)	
Internal Resistance	Approx 1.2mΩ	
Operating Temp. Range	Discharge	-20~55°C (-4~131°F)
	Charge	0~40°C (32~104°F)
	Storage	-20~50°C (-4~122°F)
Nominal Operating Temp. Range	25±3°C (77±5°F)	
Cycle Use	Initial Charging Current less than 42.5A. Voltage	
	2.4V~2.5V at 25°C(77°F)Temp. Coefficient -5mV/°C	
Standby Use	No limit on Initial Charging Current Voltage	
	2.25V~2.3V at 25°C(77°F)Temp. Coefficient -3mV/°C	
Capacity affected by Temperature	40°C (104°F)	103%
	25°C (77°F)	100%
	0°C (32°F)	86%
Self Discharge	Leoch LPG series batteries may be stored for up to 9 months at 25°C(77°F) and then a freshening charge is required. For higher temperatures the time interval will be shorter.	



Applications

Constant Current Discharge (Amperes) at 25 °C (77°F)

F.V/Time	20min	30min	45min	1h	2h	3h	4h	5h	6h	7h	8h	9h	10h	20h
1.85V/cell	147.9	116.3	88.6	77.0	49.1	37.5	31.0	26.79	23.12	20.47	18.47	16.87	15.96	8.70
1.80V/cell	169.8	129.9	97.9	85.0	53.2	40.1	32.9	28.15	24.28	21.42	19.36	17.76	16.68	9.07
1.75V/cell	190.7	142.8	105.6	90.8	56.4	42.4	34.5	29.24	25.13	22.20	19.98	18.28	17.00	9.25
1.70V/cell	205.5	153.0	112.2	96.2	59.8	44.1	35.6	30.12	26.01	22.93	20.57	18.76	17.41	9.38
1.67V/cell	213.7	159.1	116.3	99.7	61.3	45.6	36.5	30.77	26.44	23.27	20.87	19.02	17.61	9.46
1.60V/cell	231.5	170.0	124.9	105.9	63.8	47.4	37.8	31.72	27.09	23.75	21.25	19.42	17.95	9.60

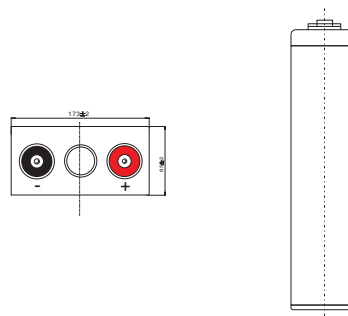
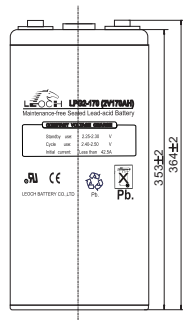
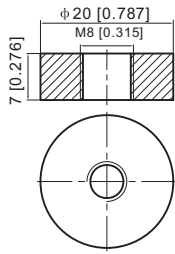
Constant Power Discharge (Watts) at 25 °C (77°F)

F.V/Time	20min	30min	45min	1h	2h	3h	4h	5h	6h	7h	8h	9h	10h	20h
1.85V/cell	280.9	222.3	170.5	148.8	95.3	72.8	60.6	52.5	45.5	40.4	36.5	33.3	31.6	17.2
1.80V/cell	318.3	246.0	186.6	163.4	102.6	77.7	63.9	55.0	47.6	42.1	38.1	35.0	32.9	17.9
1.75V/cell	353.4	267.5	199.5	173.6	108.4	81.9	66.8	56.8	49.1	43.5	39.3	36.0	33.5	18.3
1.70V/cell	376.7	284.6	211.2	183.3	114.4	85.1	68.8	58.4	50.7	44.8	40.4	36.9	34.3	18.5
1.67V/cell	387.2	292.0	216.9	188.4	116.7	87.4	70.3	59.4	51.4	45.4	40.8	37.3	34.7	18.7
1.60V/cell	414.9	309.9	231.7	199.1	120.9	90.5	72.7	61.1	52.5	46.2	41.5	38.1	35.3	18.9

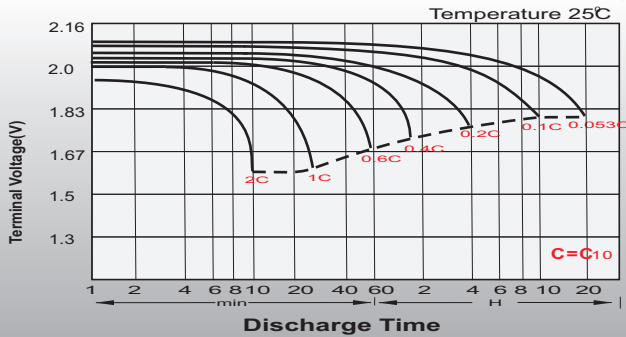
Dimensions

T11 Terminal

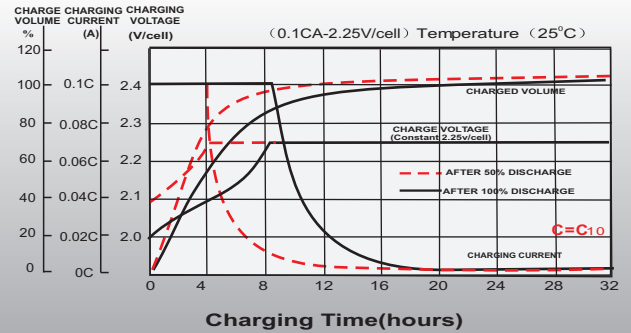
Unit: mm [inches]



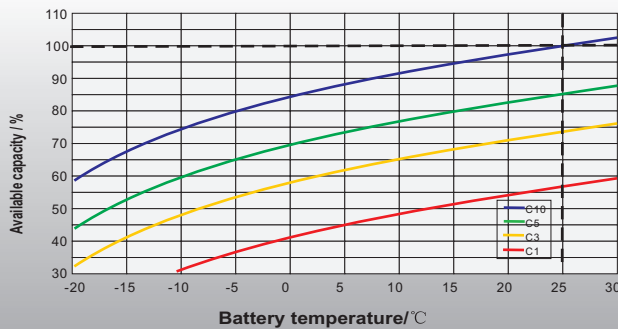
Discharge Characteristics



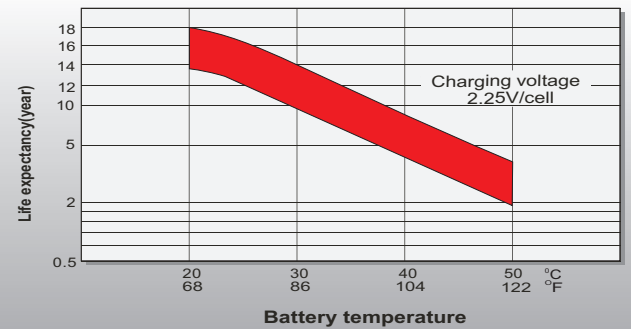
Float Charging Characteristics



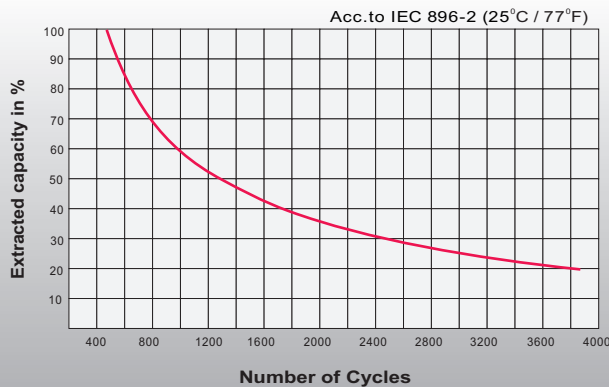
Temperature Effects in Relation to Battery Capacity



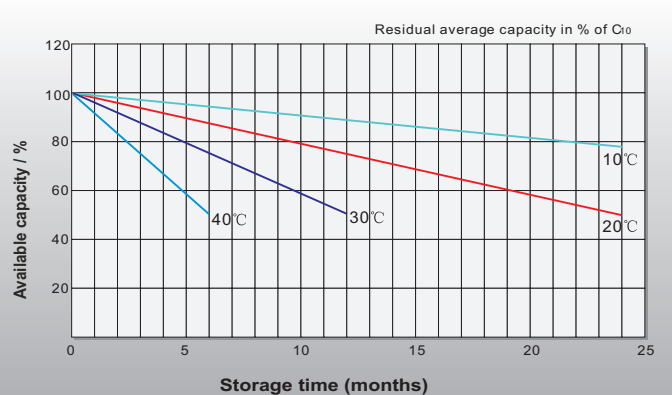
Effect of Temperature on Long Term Float Life



Cycle Life in Relation to Depth of Discharge



General Relation of Capacity VS. Storage Time



Sales Office

China sales office:

Add: 5th Floor, Xinbaohui Bldg., Nanshan, Shenzhen, China. 518052
 Tel: +86-755-86036060 (100 lines)
 Fax: +86-755-26067269
 E-mail: export@leoch.com

North America sales office:

Add: 19751 Descartes, Unit A, Foothill Ranch, CA 92610, USA
 Tel: 949-588-5853
 Fax: 949-588-5966
 E-mail: sales@leoch.us

Europe sales office:

Add: LaCampagna House. Main Road. Gloucester. GL2-8JH. United Kingdom
 Tel: +44(0) 1452 751016
 E-mail: Sales.Europe@leoch.com