

Specification

Nominal Voltage	2V	
Nominal Capacity(100HR)	173.0AH	
Dimension	Length	170±2mm (6.69 inches)
	Width	98±2mm (3.86 inches)
	Container Height	205±2mm (8.07 inches)
	Total Height (with Terminal)	212±2mm (8.35 inches)
	Approx Weight	Approx 8.5 Kg (18.7 lbs)
Terminal	T7	
Container Material	ABS	
Rated Capacity	173.0AH/1.73A	(100hr, 1.80V/cell, 25°C/77°F)
	159.0 AH/7.95A	(20hr, 1.80V/cell, 25°C/77°F)
	150.0 AH/15.0A	(10hr, 1.80V/cell, 25°C/77°F)
	129.5 AH/25.9A	(5hr, 1.75V/cell, 25°C/77°F)
	90.8 AH/90.8A	(1hr, 1.60V/cell, 25°C/77°F)
Max. Discharge Current	1200A (5s)	
Internal Resistance	Approx 1.1mΩ	
Operating Temp. Range	Discharge	-15~50°C (5~122°F)
	Charge	0~40°C (32~104°F)
	Storage	-15~40°C (5~104°F)
Nominal Operating Temp. Range	25±3°C (77±5°F)	
Cycle Use	Initial Charging Current less than 45.0A. Voltage 2.4V~2.5V at 25°C(77°F)Temp. Coefficient -5mV/°C	
	Standby Use No limit on Initial Charging Current Voltage 2.25V~2.3V at 25°C(77°F)Temp. Coefficient -3mV/°C	
Capacity affected by Temperature	40°C (104°F)	103%
	25°C (77°F)	100%
	0°C (32°F)	86%
Self Discharge	Leoch LPS series batteries may be stored for up to 6 months at 25°C(77°F) and then a freshening charge is required. For higher temperatures the time interval will be shorter.	



Applications

- ◆ Green energy systems
- ◆ Communication systems

Leoch battery is green battery, focus on the Environmental protection and Ecological protection, which well connect human being and environment into harmony. Continuous power supply for people, and being benign cycle back to the green environment.



Constant Current Discharge (Amperes) at 25 °C (77°F)

F.V/Time	15min	20min	30min	45min	1h	2h	3h	4h	5h	8h	10h	20h	48h	100h
1.85V/cell	141.6	125.5	104.4	82.6	69.1	45.5	34.5	28.0	23.8	16.8	14.4	7.68	3.46	1.70
1.80V/cell	160.1	139.6	114.1	89.0	73.3	48.4	36.4	29.4	25.0	17.7	15.0	7.95	3.52	1.73
1.75V/cell	180.8	154.5	124.0	96.0	79.4	50.8	38.3	30.7	25.9	18.2	15.4	8.10	3.58	1.76
1.70V/cell	200.2	170.2	135.1	101.2	84.0	53.6	40.1	32.0	27.0	18.9	15.8	8.29	3.63	1.78
1.65V/cell	213.7	180.6	142.1	108.0	87.1	55.5	41.6	33.1	27.9	19.4	16.2	8.49	3.69	1.80
1.60V/cell	237.0	198.6	153.4	112.6	90.8	57.5	43.0	34.2	28.9	19.9	16.6	8.69	3.76	1.82

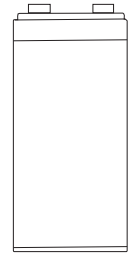
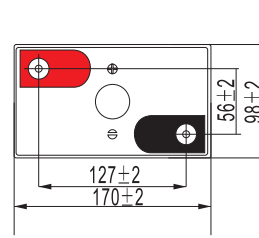
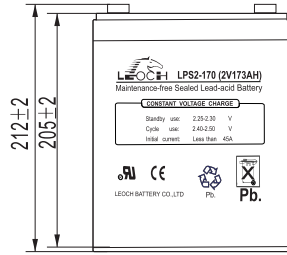
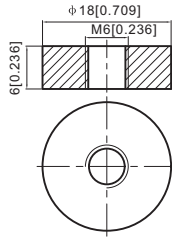
Constant Power Discharge (Watts) at 25 °C (77°F)

F.V/Time	15min	20min	30min	45min	1h	2h	3h	4h	5h	8h	10h	20h	48h	100h
1.85V/cell	265.4	237.6	200.0	159.6	133.9	88.7	67.5	55.0	46.8	33.4	28.7	15.3	6.89	3.38
1.80V/cell	296.2	260.6	215.1	170.5	141.2	93.8	70.9	57.4	49.0	34.9	29.7	15.8	7.00	3.44
1.75V/cell	330.3	285.6	231.9	182.2	152.3	98.1	74.2	59.8	50.5	35.9	30.4	16.1	7.12	3.50
1.70V/cell	360.8	312.4	251.3	191.4	160.6	103.3	77.6	62.2	52.6	37.2	31.3	16.4	7.21	3.54
1.65V/cell	382.1	328.8	262.1	202.4	165.3	106.2	80.1	64.2	54.3	38.1	32.0	16.8	7.32	3.57
1.60V/cell	416.9	357.8	281.1	209.9	171.4	109.7	82.4	66.0	56.0	39.0	32.8	17.2	7.44	3.60

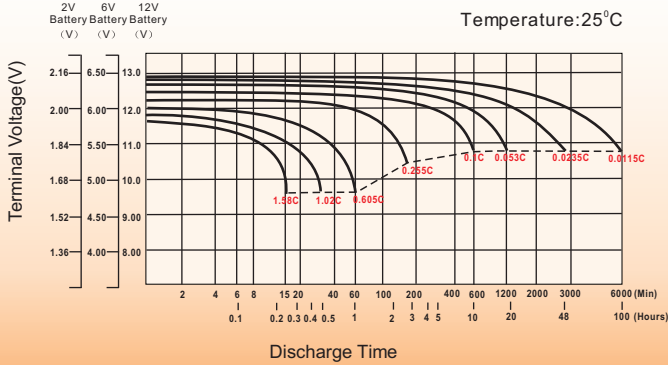
Dimensions

T7 Terminal

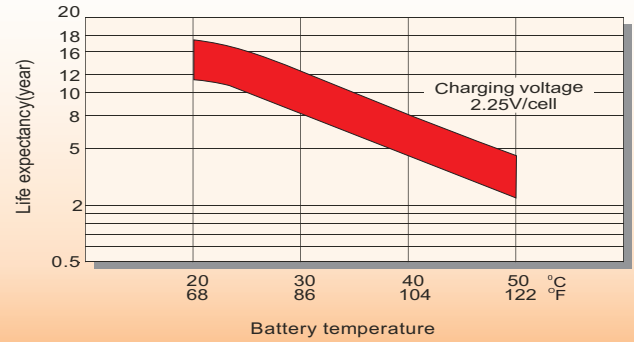
Unit: mm [inches]



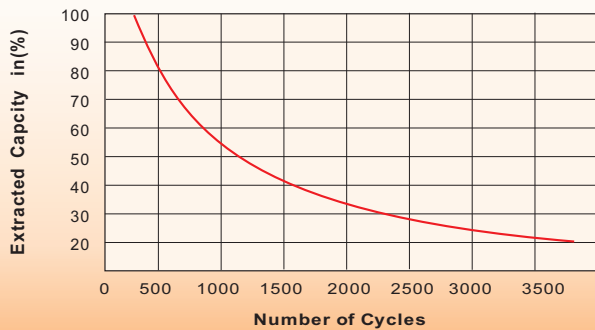
Discharge Characteristics



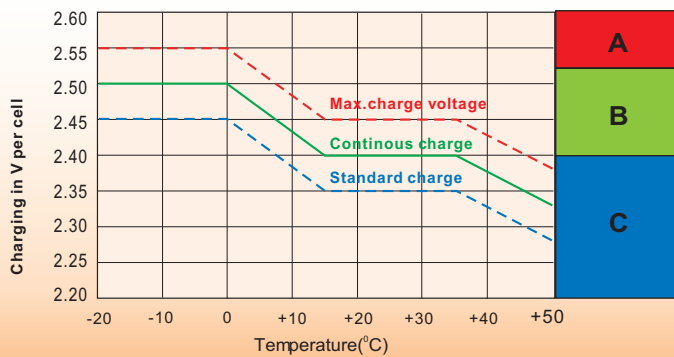
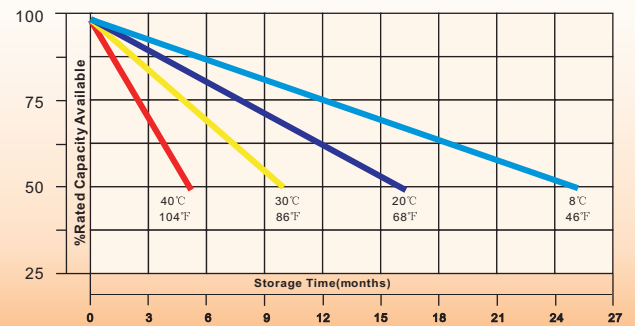
Effect of Temperature on Long Term Float Life



Cycle Service Life



Self-Discharge at Different Temperatures



Charge Mode

- A** With switch regulator (two-step controller) charge on curve max.charge voltage for max.2 hrs/day then switch over to continuous charge
- B** Standard charge without switching
- C** Boost charge (Equalizing charge with external generator) charge on curve continuous charge for max. 5 hrs/month, then switch over to curve Standard charge

Sales Office

China sales office:

Add:5th Floor,Xinbaohui Bldg.,Nanhai Blvd.,
Nanshan,Shenzhen, China. 518052
Tel:+ 86-755-86036060 (100 lines)
Fax: +86-755-26067269
E-mail:export@leoch.com
Http://www.leoch.com

North Americasales office:

Add: 19751 Descartes, Unit A,
Foothill Ranch, CA 92610, USA
Tel: 949-588-5853
Fax: 949-588-5966
E-mail: sales@leoch.us
Http://www.leoch.us

Europe sales office:

Add: LaCampagna House. Main Road.
Gloucester. GL2-8JH. United Kingdom
Tel: +44(0) 1452 751016
E-mail: Sales.Europe@leoch.com
Http://www.leoch.com