

# LPS SERIES-Solar Power

## LPS2-1350H (2V1380AH)

### Specification

Nominal Voltage	2V	
Nominal Capacity(100HR)	1380.0AH	
Dimension	Length	321±3mm (12.64 inches)
	Width	188±3mm (7.40 inches)
	Container Height	621±3mm (24.45 inches)
	Total Height (with Terminal)	651±3mm (25.63 inches)
	Approx Weight	Approx 73.6 Kg (162.3 lbs)
Terminal	T11	
Container Material	ABS	
Rated Capacity	1380.0 AH/13.8A	(100hr, 1.80V/cell, 25°C/77°F)
	1272.0 AH/63.6A	(20hr, 1.80V/cell, 25°C/77°F)
	1200.0 AH/120.0A	(10hr, 1.80V/cell, 25°C/77°F)
	1035.0 AH/207.0A	(5hr, 1.75V/cell, 25°C/77°F)
	726.0 AH/726.0A	(1hr, 1.60V/cell, 25°C/77°F)
Max. Discharge Current	9600A (5s)	
Internal Resistance	Approx 0.40mΩ	
Operating Temp. Range	Discharge	-15~50°C (5~122°F)
	Charge	0~40°C (32~104°F)
	Storage	-15~40°C (5~104°F)
Nominal Operating Temp. Range	25±3°C (77±5°F)	
Cycle Use	Initial Charging Current less than 360.0A. Voltage 2.4V~2.5V at 25°C(77°F)Temp. Coefficient -5mV/°C	
Standby Use	No limit on Initial Charging Current Voltage 2.25V~2.3V at 25°C(77°F)Temp. Coefficient -3mV/°C	
Capacity affected by Temperature	40°C (104°F)	103%
	25°C (77°F)	100%
	0°C (32°F)	86%
Self Discharge	Leoch LPS series batteries may be stored for up to 6 months at 25°C(77°F) and then a freshening charge is required. For higher temperatures the time interval will be shorter.	



### Applications

- ◆ Green energy systems
- ◆ Communication systems

Leoch battery is green battery, focus on the Environmental protection and Ecological protection, which well connect human being and environment into harmony. Continuous power supply for people, and being benign cycle back to the green environment.



### Constant Current Discharge (Amperes) at 25 °C (77°F)

F.V/Time	15min	20min	30min	45min	1h	2h	3h	4h	5h	8h	10h	20h	48h	100h
1.85V/cell	1132.6	1003.7	835.5	661.0	552.7	363.9	275.8	224.2	190.2	134.7	115.4	61.4	27.7	13.6
1.80V/cell	1280.8	1117.1	912.5	712.0	586.0	387.1	291.2	235.1	199.8	141.5	120.0	63.6	28.2	13.8
1.75V/cell	1446.2	1236.1	992.1	768.0	634.8	406.5	306.0	245.6	207.0	145.6	122.8	64.8	28.7	14.1
1.70V/cell	1601.6	1362.0	1080.7	809.6	671.9	428.7	320.8	256.2	215.9	151.1	126.7	66.3	29.1	14.3
1.65V/cell	1709.6	1444.5	1136.5	864.0	696.5	443.6	332.4	265.1	223.5	155.0	129.5	67.9	29.5	14.4
1.60V/cell	1896.1	1589.0	1227.3	900.8	726.0	460.2	343.6	273.6	231.4	159.2	132.9	69.5	30.1	14.5

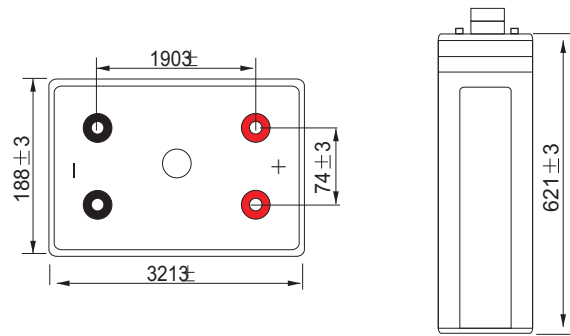
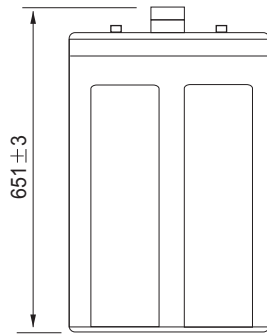
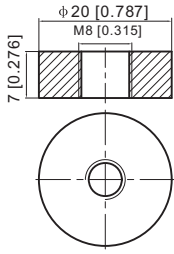
### Constant Power Discharge (Watts) at 25 °C (77°F)

F.V/Time	15min	20min	30min	45min	1h	2h	3h	4h	5h	8h	10h	20h	48h	100h
1.85V/cell	2123.5	1901.1	1600.0	1276.5	1071.1	710.0	540.1	440.3	374.7	266.8	229.3	122.2	55.2	27.1
1.80V/cell	2369.4	2084.8	1720.9	1364.3	1129.6	750.2	567.0	459.4	391.7	279.5	238.0	126.4	56.0	27.5
1.75V/cell	2642.6	2285.0	1855.5	1457.7	1218.1	784.9	593.5	478.2	404.4	287.2	243.2	128.6	57.0	28.0
1.70V/cell	2886.0	2498.9	2010.1	1531.0	1285.1	826.0	621.1	497.9	421.1	297.4	250.5	131.4	57.7	28.3
1.65V/cell	3057.0	2630.4	2096.7	1619.1	1322.6	849.8	640.8	513.3	434.5	304.5	255.6	134.4	58.5	28.6
1.60V/cell	3334.8	2862.2	2248.5	1679.1	1371.4	877.3	659.4	528.0	448.3	312.1	262.0	137.4	59.5	28.8

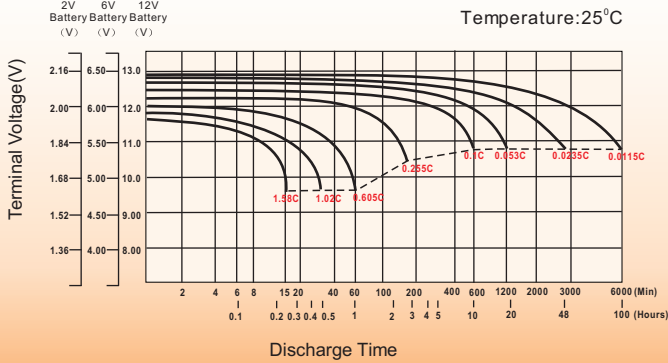
## Dimensions

### T11 Terminal

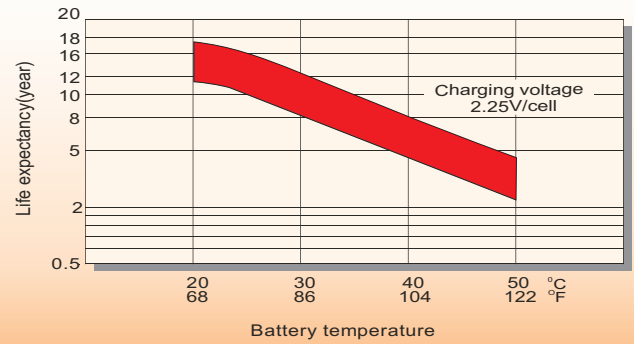
Unit: mm [inches]



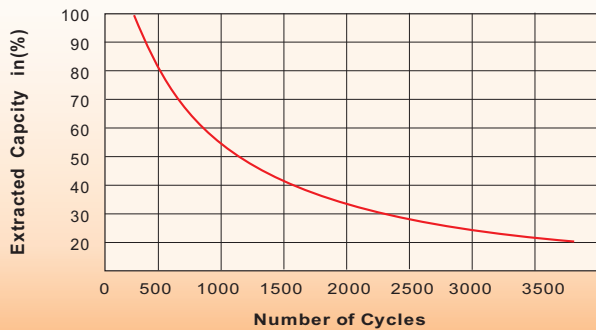
## Discharge Characteristics



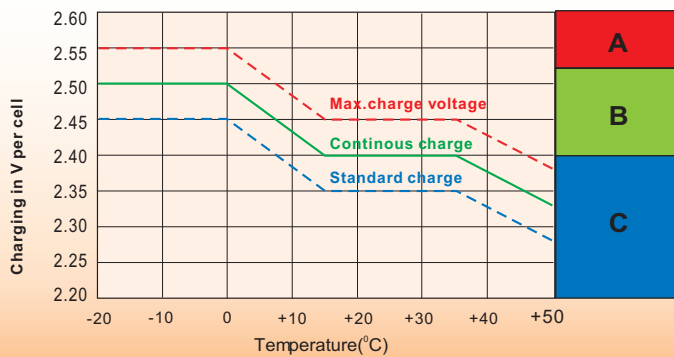
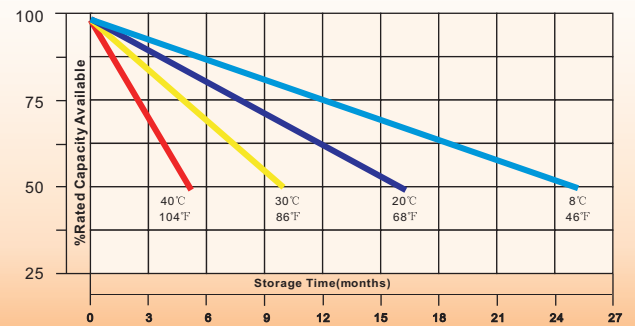
## Effect of Temperature on Long Term Float Life



## Cycle Service Life



## Self-Discharge at Different Temperatures



## Charge Mode

- A** With switch regulator (two-step controller) charge on curve max.charge voltage for max.2 hrs/day then switch over to continuous charge
- B** Standard charge without switching
- C** Boost charge (Equalizing charge with external generator) charge on curve continuous charge for max. 5 hrs/month, then switch over to curve Standard charge

## Sales Office

### China sales office:

Add:5th Floor,Xinbaohui Bldg.,Nanhai Blvd.,  
Nanshan,Shenzhen, China. 518052  
Tel:+ 86-755-86036060 (100 lines)  
Fax: +86-755-26067269  
E-mail:export@leoch.com  
Http://www.leoch.com

### North Americasales office:

Add: 19751 Descartes, Unit A,  
Foothill Ranch, CA 92610, USA  
Tel: 949-588-5853  
Fax: 949-588-5966  
E-mail: sales@leoch.us  
Http://www.leoch.us

### Europe sales office:

Add: LaCampagna House. Main Road.  
Gloucester. GL2-8JH. United Kingdom  
Tel: +44(0) 1452 751016  
E-mail:Sales.Europe@leoch.com  
Http://www.leoch.com