

LPS SERIES-Solar Power

LPS2-3500 (2V3450AH)



Specification

Nominal Voltage	2V	
Nominal Capacity(100HR)	3450.0AH	
Dimension	Length	709±3mm (27.91 inches)
	Width	350±3mm (13.78 inches)
	Container Height	337±3mm (13.27 inches)
	Total Height (with Terminal)	349±3mm (13.74 inches)
	Approx Weight	Approx 201.0 Kg (443.2 lbs)
Terminal	T11	
Container Material	ABS	
Rated Capacity	3450.0 AH/34.5A	(100hr ,1.80V/cell,25°C/77°F)
	3180.0 AH/159.0A	(20hr ,1.80V/cell,25°C/77°F)
	3000.0 AH/300.0A	(10hr,1.80V/cell,25°C/77°F)
	2587.5 AH/517.5A	(5hr,1.75V/cell,25°C/77°F)
	1815.0 AH/1815.0A	(1hr,1.60V/cell,25°C/77°F)
Max. Discharge Current	24000A (5s)	
Internal Resistance	Approx 0.2mΩ	
Operating Temp.Range	Discharge	-15~50°C (5~122°F)
	Charge	0~40°C (32~104°F)
	Storage	-15~40°C (5~104°F)
Nominal Operating Temp. Range	25±3°C (77±5°F)	
Cycle Use	Initial Charging Current less than 900.0A.Voltage 2.4V~2.5V at 25°C(77°F)Temp. Coefficient -5mV/°C	
	Standby Use No limit on Initial Charging Current Voltage 2.25V~2.3V at 25°C(77°F)Temp. Coefficient -3mV/°C	
Capacity affected by Temperature	40°C (104°F)	103%
	25°C (77°F)	100%
	0°C (32°F)	86%
Self Discharge	Leoch LPS series battery may be stored for up to 6 months at 25°C(77°F) and then a freshening charge is required. For higher temperatures the time interval will be shorter.	

Applications

- ◆ Green energy systems
- ◆ Communication systems

Leoch battery is green battery, focus on the Environmental protection and Ecological protection, which well connect human being and environment into harmony. Continuous power supply for people, and being benign cycle back to the green environment.



Constant Current Discharge (Amperes) at 25 °C (77°F)

F.V/Time	15min	20min	30min	45min	1h	2h	3h	4h	5h	8h	10h	20h	48h	100h
1.85V/cell	2831.4	2509.3	2088.8	1652.4	1381.8	909.8	689.6	560.4	475.6	336.7	288.6	153.5	69.2	33.9
1.80V/cell	3202.0	2792.7	2281.4	1779.9	1465.0	967.8	728.0	587.8	499.5	353.6	300.0	159.0	70.4	34.5
1.75V/cell	3615.5	3090.3	2480.3	1920.0	1587.0	1016.3	765.0	614.1	517.5	364.1	307.0	162.0	71.6	35.2
1.70V/cell	\	3405.0	2701.7	2024.0	1679.7	1071.8	802.0	640.5	539.7	377.6	316.7	165.8	72.6	35.6
1.65V/cell	\	3611.2	2841.4	2160.0	1741.2	1109.1	831.0	662.9	558.9	387.5	323.7	169.8	73.8	36.0
1.60V/cell	\	\	3068.4	2252.0	1815.0	1150.5	859.0	683.9	578.6	398.1	332.3	173.8	75.1	36.4

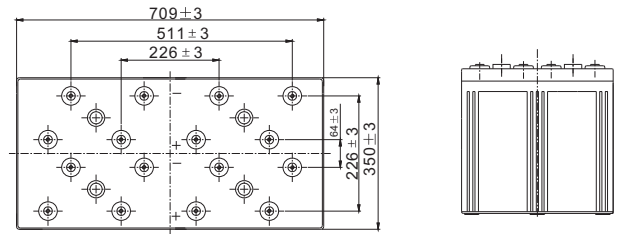
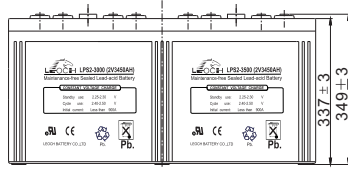
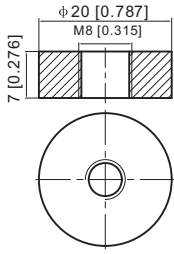
Constant Power Discharge (Watts) at 25 °C (77°F)

F.V/Time	15min	20min	30min	45min	1h	2h	3h	4h	5h	8h	10h	20h	48h	100h
1.85V/cell	5308.8	4752.7	4000.0	3191.2	2677.8	1774.9	1350.3	1100.9	936.6	667.1	573.3	305.5	137.9	67.7
1.80V/cell	5923.4	5211.9	4302.2	3410.7	2824.0	1875.6	1417.6	1148.4	979.2	698.8	595.0	315.9	140.1	68.7
1.75V/cell	6606.6	5712.5	4638.9	3644.2	3045.2	1962.2	1483.8	1195.6	1011.0	717.9	608.1	321.6	142.4	70.0
1.70V/cell	\	6247.1	5025.2	3827.4	3212.8	2065.0	1552.7	1244.7	1052.7	743.4	626.3	328.6	144.1	70.8
1.65V/cell	\	6576.0	5241.8	4047.8	3306.6	2124.6	1601.9	1283.3	1086.3	761.1	639.0	336.1	146.3	71.5
1.60V/cell	\	\	5621.3	4197.7	3428.5	2193.3	1648.4	1320.0	1120.8	780.3	655.1	343.5	148.7	72.1

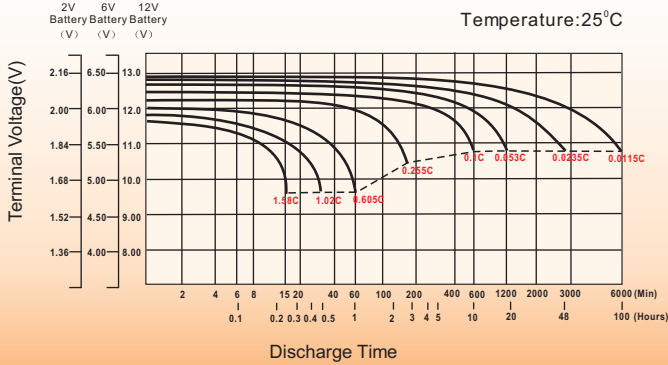
Dimensions

T11 Terminal

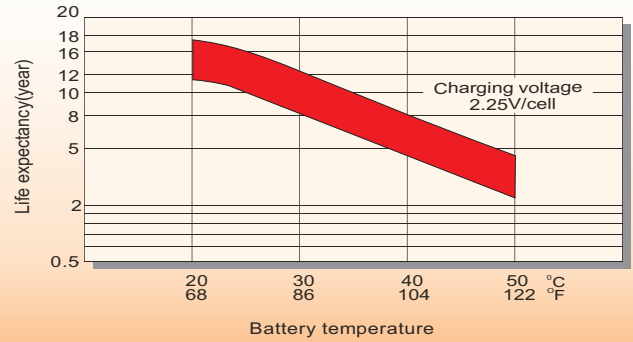
Unit: mm [inches]



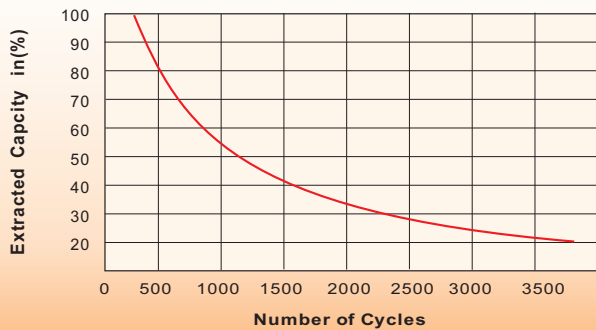
Discharge Characteristics



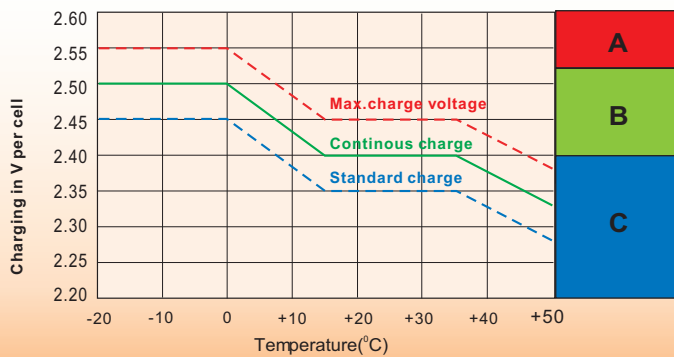
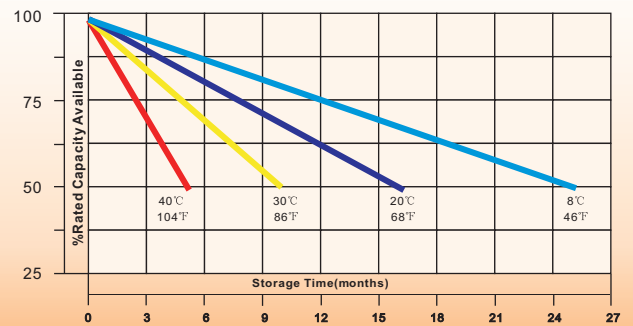
Effect of Temperature on Long Term Float Life



Cycle Service Life



Self-Discharge at Different Temperatures



Charge Mode

- A** With switch regulator (two-step controller) charge on curve max.charge voltage for max.2 hrs/day then switch over to continuous charge
- B** Standard charge without switching
- C** Boost charge (Equalizing charge with external generator) charge on curve continuous charge for max. 5 hrs/month, then switch over to curve Standard charge

Sales Office

China sales office:

Add:5th Floor,Xinbaohui Bldg.,Nanhai Blvd.,
Nanshan,Shenzhen, China. 518052
Tel:+ 86-755-86036060 (100 lines)
Fax: +86-755-26067269
E-mail:export@leoch.com
Http://www.leoch.com

North Americasales office:

Add: 19751 Descartes, Unit A,
Foothill Ranch, CA 92610, USA
Tel: 949-588-5853
Fax: 949-588-5966
E-mail: sales@leoch.us
Http://www.leoch.us

Europe sales office:

Add: LaCampaña House. Main Road.
Gloucester. GL2-8JH. United Kingdom
Tel: +44(0) 1452 751016
E-mail:Sales.Europe@leoch.com
Http://www.leoch.com