

# LPL SERIES-Long Life Standby

## LPL2-1800 (2V1800AH)



### Specification

Nominal Voltage	2V	
Nominal Capacity(10HR)	1800.0AH	
Dimension	Length	403±3mm (15.87 inches)
	Width	354±3mm (13.94 inches)
	Container Height	339±3mm (13.35 inches)
	Total Height (with Terminal)	349±3mm (13.74 inches)
Approx Weight	Approx 116.5 Kg (256.9 lbs)	
Terminal	T11	
Container Material	ABS	
Rated Capacity	1926.0 AH/96.3A	(20hr, 1.80V/cell, 25°C/77°F)
	1800.0 AH/180.0A	(10hr, 1.80V/cell, 25°C/77°F)
	1566.0 AH/313.2A	(5hr, 1.75V/cell, 25°C/77°F)
	1404.0 AH/468.0A	(3hr, 1.75V/cell, 25°C/77°F)
	1116.0 AH/1116.0A	(1hr, 1.60V/cell, 25°C/77°F)
Max. Discharge Current	14400A (5s)	
Internal Resistance	Approx 0.3mΩ	
Operating Temp. Range	Discharge : -15~50°C (5~122°F)	
	Charge : 0~40°C (32~104°F)	
	Storage : -15~40°C (5~104°F)	
Nominal Operating Temp. Range	25±3°C (77±5°F)	
Cycle Use	Initial Charging Current less than 540.0A. Voltage 2.4V~2.5V at 25°C(77°F)Temp. Coefficient -5mV/°C	
Standby Use	No limit on Initial Charging Current Voltage 2.25V~2.3V at 25°C(77°F)Temp. Coefficient -3mV/°C	
Capacity affected by Temperature	40°C (104°F)	103%
	25°C (77°F)	100%
	0°C (32°F)	86%
Self Discharge	Leoch LPL series batteries may be stored for up to 6 months at 25°C(77°F) and then a freshening charge is required. For higher temperatures the time interval will be shorter.	

### Applications

- ◆ Tele-communication central station (wired or cellular)
- ◆ Power system communication, military communication, etc.
- ◆ Network communication including: data transmission, television signal transmission, etc.
- ◆ Uninterruptable Power System (UPS- for Telecom)
- ◆ EPS



### Constant Current Discharge (Amperes) at 25 °C (77°F)

F.V/Time	10min	15min	20min	30min	45min	1h	2h	3h	4h	5h	6h	8h	10h	20h
1.85V/cell	\	1771.2	1571.4	1303.2	1005.6	860.4	557.1	418.9	343.1	288.7	252.9	202.9	174.4	93.1
1.80V/cell	\	\	1737.3	1415.5	1084.8	908.2	598.9	450.0	364.7	306.0	268.0	213.5	180.0	96.3
1.75V/cell	\	\	1920.0	1538.1	1183.2	990.0	622.8	468.0	377.3	313.2	276.4	220.7	184.8	98.7
1.70V/cell	\	\	\	1679.3	1274.4	1047.6	656.1	492.6	394.2	331.2	289.6	230.0	191.9	101.3
1.65V/cell	\	\	\	1772.1	1348.8	1083.6	680.2	512.4	409.8	341.6	299.7	237.8	197.3	104.4
1.60V/cell	\	\	\	1891.0	1401.6	1116.0	697.5	525.6	418.9	350.0	306.0	241.9	201.5	106.1

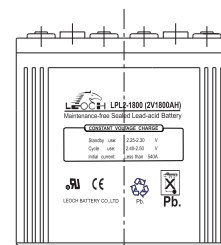
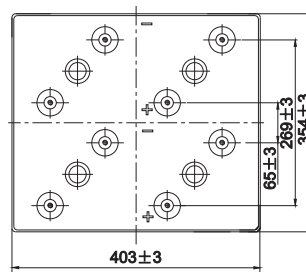
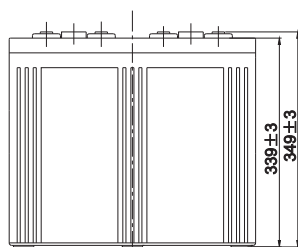
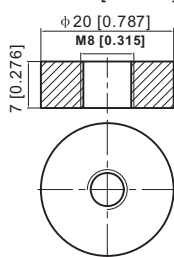
### Constant Power Discharge (Watts) at 25 °C (77°F)

F.V/Time	10min	15min	20min	30min	45min	1h	2h	3h	4h	5h	6h	8h	10h	20h
1.85V/cell	\	3340.5	2993.5	2510.0	1953.1	1676.8	1093.0	824.9	677.8	571.7	502.3	404.7	348.7	186.2
1.80V/cell	\	\	3261.5	2684.8	2090.6	1760.6	1167.2	881.2	716.6	603.2	530.1	424.6	359.3	192.4
1.75V/cell	\	\	3570.3	2893.7	2258.7	1910.5	1209.4	912.9	738.8	615.3	545.0	437.8	368.5	197.0
1.70V/cell	\	\	\	3141.9	2423.9	2015.3	1271.4	959.1	770.4	649.6	570.3	455.8	382.4	201.9
1.65V/cell	\	\	\	3288.7	2542.5	2069.7	1310.5	993.4	797.8	667.8	588.3	470.0	392.5	208.0
1.60V/cell	\	\	\	3485.1	2628.0	2120.4	1337.4	1014.4	813.0	681.8	598.8	477.2	400.0	211.0

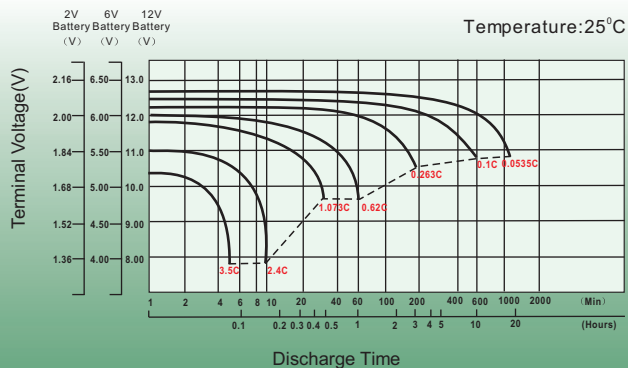
## Dimensions

### T11 Terminal

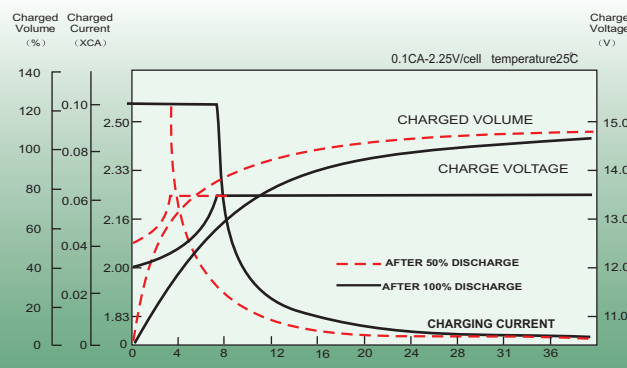
Unit: mm [inches]



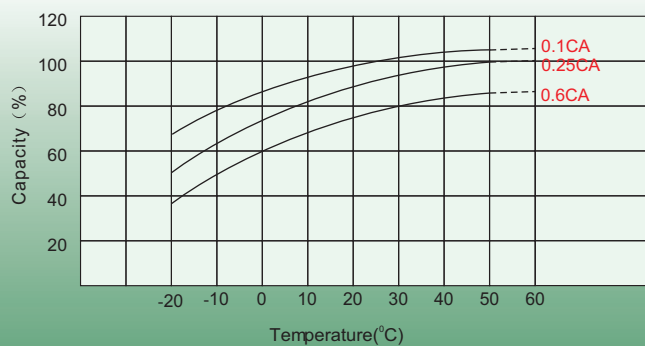
## Discharge Characteristics



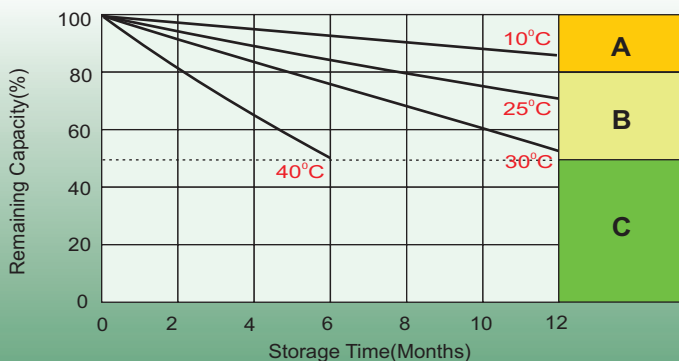
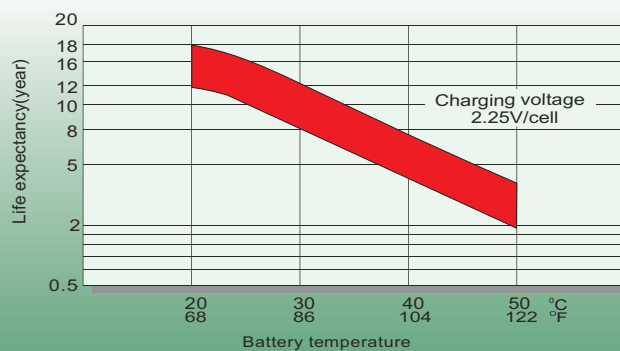
## Float Charging Characteristics



## Temperature Effects in Relation to Battery Capacity



## Effect of Temperature on Long Term Float Life



## Self Discharge Characteristics

- A** No supplementary charge required  
(Carry out supplementary charge before use if 100% capacity is required.)
- B** Supplementary charge required before use. Optional charging way as below:
  1. Charged for above 3 days at limited current 0.25CA and constant volatge 2.25V/cell.
  2. Charged for above 20hours at limited current 0.25CA and constant volatge 2.45V/cell.
  3. Charged for 8~10hours at limited current 0.05CA .
- C** Supplementary charge may often fail to recover the capacity.  
The battery should never be left standing till this is reached.

## Sales Office

### China sales office:

Add: 5th Floor, Xinbaohui Bldg., Nanhai Blvd.,  
Nanshan, Shenzhen, China. 518052  
Tel: + 86-755-86036060 (100 lines)  
Fax: +86-755-26067269  
E-mail: export@leoch.com  
Http://www.leoch.com

### North Americasales office:

Add: 19751 Descartes, Unit A,  
Foothill Ranch, CA 92610, USA  
Tel: 949-588-5853  
Fax: 949-588-5966  
E-mail: sales@leoch.us  
Http://www.leoch.us

### Europe sales office:

Add: LaCampa House. Main Road.  
Gloucester. GL2-8JH. United Kingdom  
Tel: +44(0) 1452 751016  
E-mail: Sales.Europe@leoch.com  
Http://www.leoch.com