



### Specification

Nominal Voltage	2V	
Nominal Capacity(10HR)	3000.0AH	
Dimension	Length	709±3mm (27.91 inches)
	Width	350±3mm (13.78 inches)
	Container Height	337±3mm (13.27 inches)
	Total Height (with Terminal)	349±3mm (13.74 inches)
Approx Weight	Approx 205.0 Kg (452.0 lbs)	
Terminal	T11	
Container Material	ABS	
Rated Capacity	3210.0 AH/160.5A	(20hr, 1.80V/cell, 25°C/77°F)
	3000.0 AH/300.0A	(10hr, 1.80V/cell, 25°C/77°F)
	2610.0 AH/522.0A	(5hr, 1.75V/cell, 25°C/77°F)
	2340.0 AH/780.0A	(3hr, 1.75V/cell, 25°C/77°F)
	1860.0 AH/1860.0A	(1hr, 1.60V/cell, 25°C/77°F)
Max. Discharge Current	24000A (5s)	
Internal Resistance	Approx 0.2mΩ	
Operating Temp. Range	Discharge : -15~50°C (5~122°F)	
	Charge : 0~40°C (32~104°F)	
	Storage : -15~40°C (5~104°F)	
Nominal Operating Temp. Range	25±3°C (77±5°F)	
Cycle Use	Initial Charging Current less than 900.0A. Voltage 2.4V~2.5V at 25°C(77°F)Temp. Coefficient -5mV/°C	
Standby Use	No limit on Initial Charging Current Voltage 2.25V~2.3V at 25°C(77°F)Temp. Coefficient -3mV/°C	
Capacity affected by Temperature	40°C (104°F)	103%
	25°C (77°F)	100%
	0°C (32°F)	86%
Self Discharge	Leoch LPL series batteries may be stored for up to 6 months at 25°C(77°F) and then a freshening charge is required. For higher temperatures the time interval will be shorter.	

### Applications

- ◆ Tele-communication central station (wired or cellular)
- ◆ Power system communication, military communication, etc.
- ◆ Network communication including: data transmission, television signal transmission, etc.
- ◆ Uninterruptable Power System (UPS- for Telecom)
- ◆ EPS



### Constant Current Discharge (Amperes) at 25 °C (77°F)

F.V/Time	10min	15min	20min	30min	45min	1h	2h	3h	4h	5h	6h	8h	10h	20h
1.85V/cell	3510.0	2952.0	2619.0	2172.0	1676.0	1434.0	928.5	698.1	571.9	481.1	421.5	338.2	290.7	155.1
1.80V/cell	\	3314.9	2895.6	2359.1	1808.0	1513.7	998.1	750.0	607.9	510.0	446.7	355.9	300.0	160.5
1.75V/cell	\	3736.1	3200.0	2563.5	1972.0	1650.0	1038.0	780.0	628.9	522.0	460.6	367.8	308.1	164.6
1.70V/cell	\	\	3532.2	2798.8	2124.0	1746.0	1093.5	821.0	657.0	552.0	482.7	383.3	319.9	168.8
1.65V/cell	\	\	3757.7	2953.6	2248.0	1806.0	1133.7	854.0	683.0	569.4	499.5	396.3	328.9	174.0
1.60V/cell	\	\	\	3151.6	2336.0	1860.0	1162.5	876.0	698.1	583.3	510.0	403.1	335.8	176.8

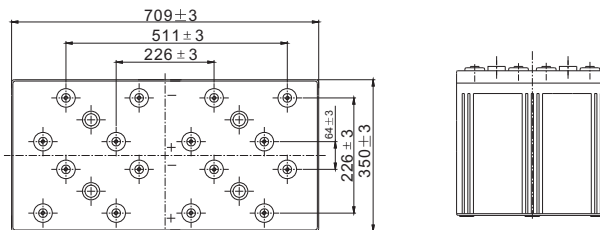
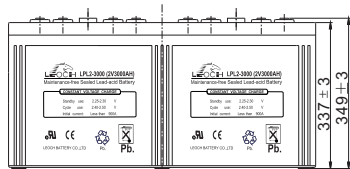
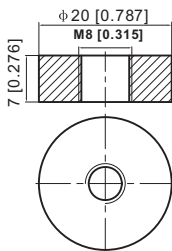
### Constant Power Discharge (Watts) at 25 °C (77°F)

F.V/Time	10min	15min	20min	30min	45min	1h	2h	3h	4h	5h	6h	8h	10h	20h
1.85V/cell	6553.9	5567.5	4989.2	4183.3	3255.1	2794.7	1821.7	1374.8	1129.6	952.9	837.1	674.5	581.1	310.4
1.80V/cell	\	6168.7	5435.9	4474.7	3484.4	2934.4	1945.3	1468.7	1194.3	1005.4	883.5	707.7	598.8	320.7
1.75V/cell	\	6868.1	5950.4	4822.8	3764.5	3184.2	2015.6	1521.5	1231.3	1025.5	908.3	729.7	614.1	328.4
1.70V/cell	\	\	6519.3	5236.6	4039.8	3358.8	2119.0	1598.5	1284.0	1082.7	950.4	759.7	637.3	336.6
1.65V/cell	\	\	6884.1	5481.2	4237.5	3449.5	2184.2	1655.6	1329.7	1113.1	980.5	783.4	654.1	346.6
1.60V/cell	\	\	\	5808.4	4380.0	3534.0	2229.0	1690.7	1355.0	1136.3	998.1	795.4	666.7	351.7

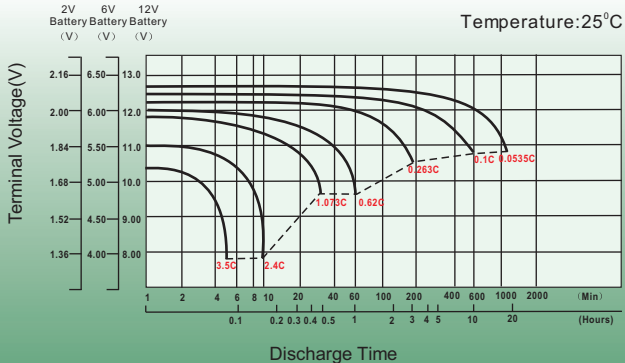
# Dimensions

## T11 Terminal

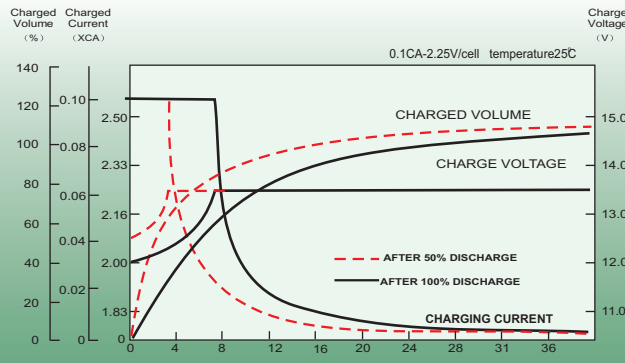
Unit: mm [inches]



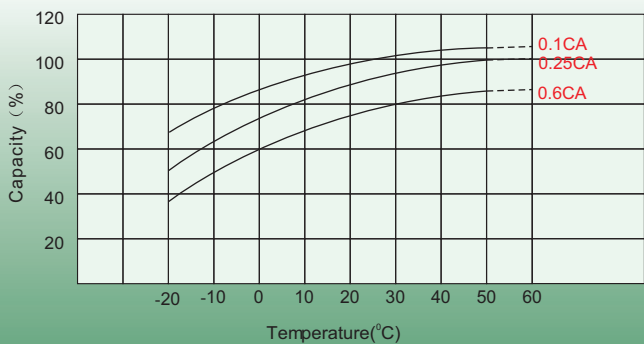
## Discharge Characteristics



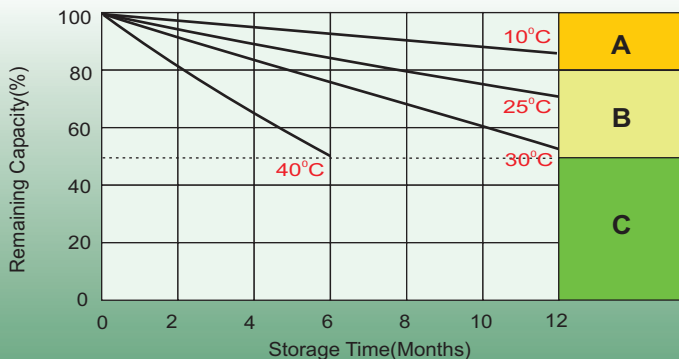
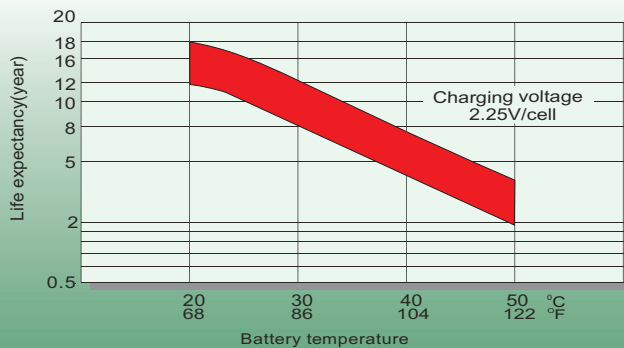
## Float Charging Characteristics



## Temperature Effects in Relation to Battery Capacity



## Effect of Temperature on Long Term Float Life



## Self Discharge Characteristics

- A** No supplementary charge required  
(Carry out supplementary charge before use if 100% capacity is required.)
- B** Supplementary charge required before use. Optional charging way as below:
  1. Charged for above 3 days at limited current 0.25CA and constant volatge 2.25V/cell.
  2. Charged for above 20hours at limited current 0.25CA and constant volatge 2.45V/cell.
  3. Charged for 8~10hours at limited current 0.05CA .
- C** Supplementary charge may often fail to recover the capacity.  
The battery should never be left standing till this is reached.

## Sales Office

### China sales office:

Add: 5th Floor, Xinbaohui Bldg., Nanhai Blvd.,  
Nanshan, Shenzhen, China. 518052  
Tel: + 86-755-86036060 (100 lines)  
Fax: +86-755-26067269  
E-mail: export@leoch.com  
Http://www.leoch.com

### North Americasales office:

Add: 19751 Descartes, Unit A,  
Foothill Ranch, CA 92610, USA  
Tel: 949-588-5853  
Fax: 949-588-5966  
E-mail: sales@leoch.us  
Http://www.leoch.us

### Europe sales office:

Add: LaCampa House. Main Road.  
Gloucester. GL2-8JH. United Kingdom  
Tel: +44(0) 1452 751016  
E-mail: Sales.Europe@leoch.com  
Http://www.leoch.com