

LPL SERIES-Long Life Standby

LPL2-3500 (2V3500AH)



Specification

Nominal Voltage	2V	
Nominal Capacity(10HR)	3500.0AH	
Dimension	Length	709±3mm (27.91 inches)
	Width	350±3mm (13.78 inches)
	Container Height	337±3mm (13.27 inches)
	Total Height (with Terminal)	349±3mm (13.74 inches)
Approx Weight	Approx 218.3Kg (481.8lbs)	
Terminal	T11	
Container Material	ABS	
Rated Capacity	3745.0 AH/187.3A	(20hr, 1.80V/cell, 25°C/77°F)
	3500.0 AH/350.0A	(10hr, 1.80V/cell, 25°C/77°F)
	3045.0 AH/609.0A	(5hr, 1.75V/cell, 25°C/77°F)
	2730.0 AH/910.0A	(3hr, 1.75V/cell, 25°C/77°F)
	2170 AH/48.3A	(1hr, 1.60V/cell, 25°C/77°F)
Max. Discharge Current	28000A (5s)	
Internal Resistance	Approx 0.15mΩ	
Operating Temp. Range	Discharge : -15~50°C (5~122°F)	
	Charge : 0~40°C (32~104°F)	
	Storage : -15~40°C (5~104°F)	
Nominal Operating Temp. Range	25±3°C (77±5°F)	
Cycle Use	Initial Charging Current less than 1050.0A. Voltage 2.4V~2.5V at 25°C(77°F)Temp. Coefficient -5mV/°C	
Standby Use	No limit on Initial Charging Current Voltage 2.25V~2.3V at 25°C(77°F)Temp. Coefficient -3mV/°C	
Capacity affected by Temperature	40°C (104°F)	103%
	25°C (77°F)	100%
	0°C (32°F)	86%
Self Discharge	Leoch LPL series battery may be stored for up to 6 months at 25°C(77°F) and then a freshening charge is required. For higher temperatures the time interval will be shorter.	

Applications

- ◆ Tele-communication central station (wired or cellular)
- ◆ Power system communication, military communication, etc.
- ◆ Network communication including: data transmission, television signal transmission, etc.
- ◆ Uninterruptable Power System (UPS- for Telecom)
- ◆ EPS



Constant Current Discharge (Amperes) at 25 °C (77°F)

F.V/Time	10min	15min	20min	30min	45min	1h	2h	3h	4h	5h	6h	8h	10h	20h
1.85V/cell	\	3444.0	3055.5	2534.0	1955.3	1673.0	1083.3	814.5	667.2	561.3	491.8	394.6	339.2	181.0
1.80V/cell	\	3867.4	3378.2	2752.3	2109.3	1765.9	1164.5	875.0	709.2	595.0	521.1	415.2	350.0	187.3
1.75V/cell	\	\	3733.3	2990.8	2300.7	1925.0	1211.0	910.0	733.7	609.0	537.4	429.1	359.4	192.0
1.70V/cell	\	\	\	3265.3	2478.0	2037.0	1275.8	957.8	766.5	644.0	563.2	447.2	373.2	196.9
1.65V/cell	\	\	\	3445.8	2622.7	2107.0	1322.7	996.3	796.8	664.3	582.8	462.3	383.7	203.0
1.60V/cell	\	\	\	3676.9	2725.3	2170.0	1356.3	1022.0	814.5	680.5	595.0	470.3	391.7	206.3

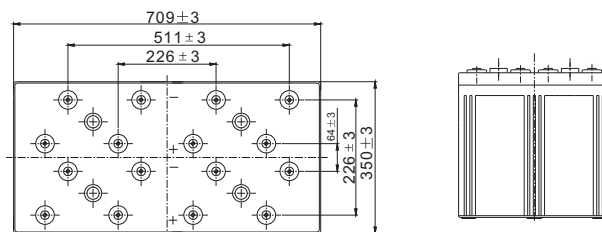
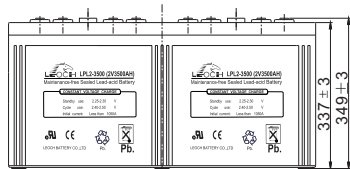
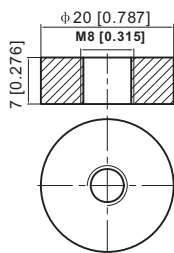
Constant Power Discharge (Watts) at 25 °C (77°F)

F.V/Time	10min	15min	20min	30min	45min	1h	2h	3h	4h	5h	6h	8h	10h	20h
1.85V/cell	\	6495.4	5820.7	4880.5	3797.6	3260.5	2125.3	1603.9	1317.9	1111.7	976.6	787.0	678.0	362.1
1.80V/cell	\	7196.8	6341.8	5220.5	4065.1	3423.4	2269.5	1713.4	1393.4	1172.9	1030.7	825.6	698.6	374.1
1.75V/cell	\	\	6942.2	5626.6	4392.0	3714.9	2351.5	1775.0	1436.6	1196.4	1059.7	851.3	716.5	383.1
1.70V/cell	\	\	\	6109.3	4713.2	3918.6	2472.1	1864.9	1498.0	1263.2	1108.8	886.3	743.5	392.6
1.65V/cell	\	\	\	6394.8	4943.7	4024.4	2548.2	1931.6	1551.3	1298.6	1143.9	914.0	763.1	404.4
1.60V/cell	\	\	\	6776.5	5110.0	4123.0	2600.5	1972.5	1580.8	1325.7	1164.4	927.9	777.8	410.3

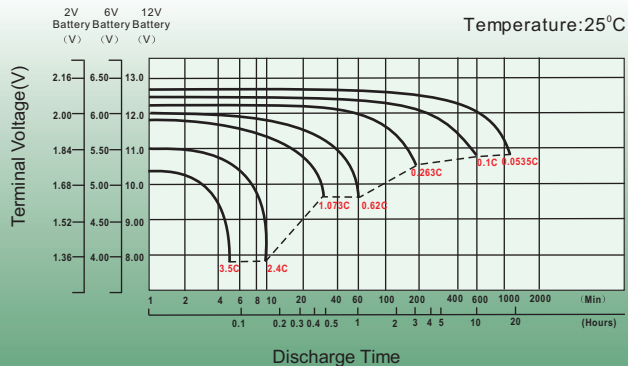
Dimensions

T11 Terminal

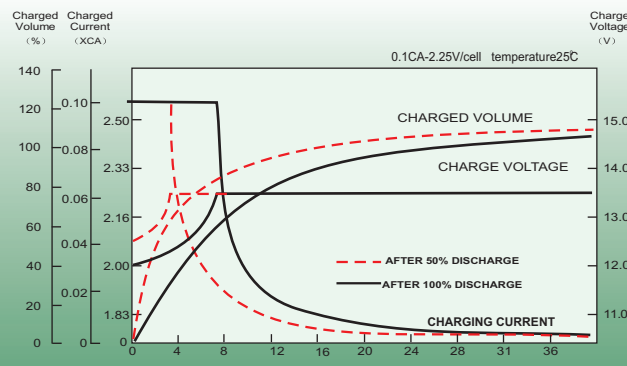
Unit: mm [inches]



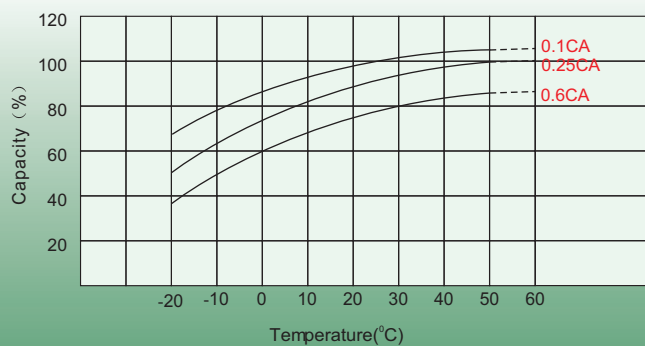
Discharge Characteristics



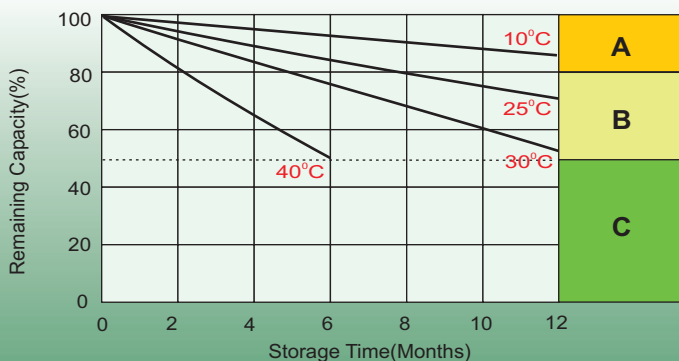
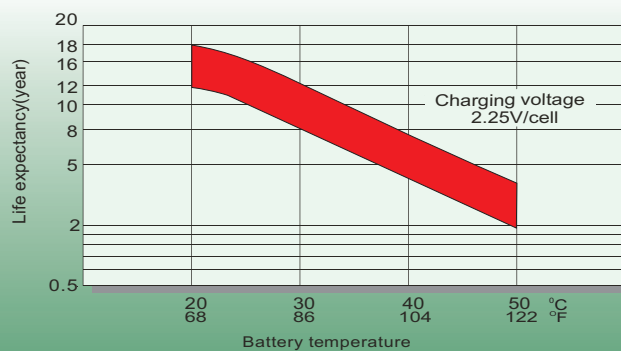
Float Charging Characteristics



Temperature Effects in Relation to Battery Capacity



Effect of Temperature on Long Term Float Life



Self Discharge Characteristics

- A** No supplementary charge required
(Carry out supplementary charge before use if 100% capacity is required.)
- B** Supplementary charge required before use. Optional charging way as below:
 1. Charged for above 3 days at limited current 0.25CA and constant volatge 2.25V/cell.
 2. Charged for above 20hours at limited current 0.25CA and constant volatge 2.45V/cell.
 3. Charged for 8~10hours at limited current 0.05CA .
- C** Supplementary charge may often fail to recover the capacity.
The battery should never be left standing till this is reached.

Sales Office

China sales office:

Add: 5th Floor, Xinbaohui Bldg., Nanhai Blvd.,
Nanshan, Shenzhen, China. 518052
Tel: +86-755-86036060 (100 lines)
Fax: +86-755-26067269
E-mail: export@leoch.com
Http://www.leoch.com

North Americasales office:

Add: 19751 Descartes, Unit A,
Foothill Ranch, CA 92610, USA
Tel: 949-588-5853
Fax: 949-588-5966
E-mail: sales@leoch.us
Http://www.leoch.us

Europe sales office:

Add: La Campagna House, Main Road,
Gloucester, GL2-8JH, United Kingdom
Tel: +44(0) 1452 751016
E-mail: Sales.Europe@leoch.com
Http://www.leoch.com