

### Specification

Nominal Voltage	12V	
Nominal Capacity(8HR)	38.0AH	
Dimension	Length	197±2mm (7.76 inches)
	Width	165±2mm (6.50 inches)
	Container Height	170±2mm (6.69 inches)
	Total Height (with Terminal)	170±2mm (6.69 inches)
Approx Weight	Approx 13.2 kg (29.1lbs)	
Terminal	T6 / T10 / T12	
Container Material	ABS	
Rated Capacity	38.7 AH/3.87A	(10hr , 1.80V/cell, 25°C/77°F)
	38.0 AH/4.75A	(8hr, 1.75V/cell, 25°C/77°F)
	33.8 AH/6.76A	(5hr, 1.75V/cell, 25°C/77°F)
	30.8 AH/10.26A	(3hr, 1.75V/cell, 25°C/77°F)
	25.0 AH/25.0A	(1hr, 1.60V/cell, 25°C/77°F)
Max. Discharge Current	456A (5s)	
Internal Resistance	Approx 10mΩ	
Operating Temp. Range	Discharge	-15~50°C (5~122°F)
	Charge	0~40°C (32~104°F)
	Storage	-15~40°C (5~104°F)
Nominal Operating Temp. Range	25±3°C (77±5°F)	
Cycle Use	Initial Charging Current less than 11.4A. Voltage	
	14.4V~15.0V at 25°C(77°F)Temp. Coefficient -30mV/°C	
Standby Use	No limit on Initial Charging Current Voltage	
	13.5V~13.8V at 25°C(77°F)Temp. Coefficient -20mV/°C	
Capacity affected by Temperature	40°C (104°F)	103%
	25°C (77°F)	100%
	0°C (32°F)	86%
Self Discharge	Leoch LPX series batteries may be stored for up to 6 months at 25°C(77°F) and then a freshening charge is required. For higher temperatures the time interval will be shorter.	



### Applications

- ◆ UPS (High rate)
- ◆ High power backup supply
- ◆ Emergency power supply
- ◆ Starting system
- ◆ Power tools
- ◆ Emergency lighting
- ◆ Electric starting



### Constant Current Discharge (Amperes) at 25 °C (77°F)

F.V/Time	5min	10min	15min	20min	30min	45min	1h	2h	3h	4h	5h	6h	8h	10h	20h
1.85V/cell	72.8	56.2	47.4	41.5	30.8	23.4	19.3	12.1	9.36	7.49	6.14	5.31	4.40	3.65	2.04
1.80V/cell	97.8	71.8	57.3	49.0	36.3	27.3	21.6	13.2	10.1	8.00	6.59	5.70	4.67	3.87	2.06
1.75V/cell	110.2	78.9	62.6	52.7	37.7	28.3	22.6	13.7	10.3	8.17	6.76	5.85	4.75	3.91	2.08
1.70V/cell	121.4	85.9	66.8	55.4	39.2	29.4	23.3	14.3	10.5	8.39	6.94	5.97	4.82	3.94	2.12
1.65V/cell	133.9	92.8	71.1	58.9	41.4	30.2	24.1	14.6	11.0	8.68	7.13	6.11	4.89	4.03	2.14
1.60V/cell	147.6	100.7	76.0	62.7	43.7	31.4	25.0	15.1	11.3	8.95	7.36	6.24	4.94	4.07	2.15

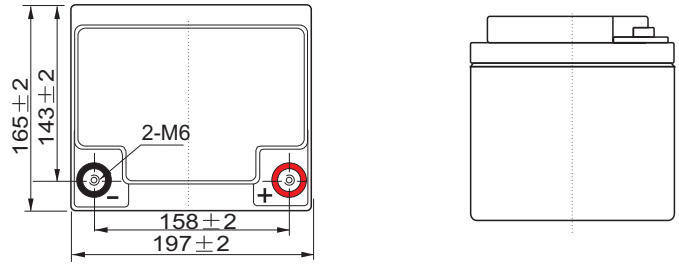
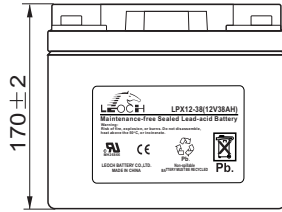
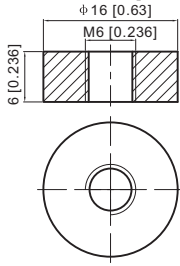
### Constant Power Discharge (Watts) at 25 °C (77°F)

F.V/Time	5min	10min	15min	20min	30min	45min	1h	2h	3h	4h	5h	6h	8h	10h	20h
1.85V/cell	133.2	103.7	88.5	78.1	58.7	45.1	37.2	23.5	18.3	14.6	12.0	10.4	8.69	7.23	4.03
1.80V/cell	176.8	131.0	105.5	91.0	68.2	52.0	41.5	25.5	19.5	15.5	12.9	11.2	9.19	7.64	4.07
1.75V/cell	195.2	141.6	113.8	97.0	70.2	53.5	43.2	26.3	19.8	15.8	13.2	11.4	9.33	7.71	4.11
1.70V/cell	208.9	150.9	119.8	101.2	72.6	55.4	44.4	27.3	20.3	16.2	13.5	11.6	9.45	7.78	4.18
1.65V/cell	227.1	161.3	126.4	106.7	76.0	56.3	45.6	27.9	21.1	16.7	13.8	11.9	9.57	7.93	4.23
1.60V/cell	244.7	171.2	133.0	112.4	79.7	58.3	46.9	28.7	21.6	17.2	14.2	12.1	9.65	8.00	4.24

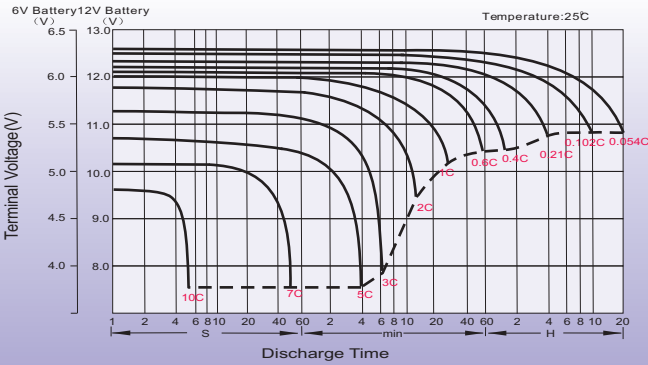
## Dimensions

### T6 Terminal

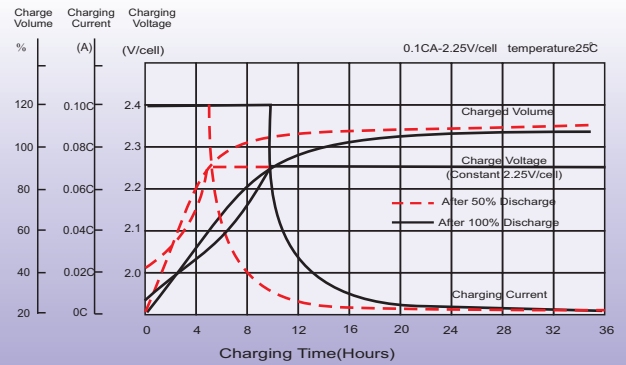
Unit: mm [inches]



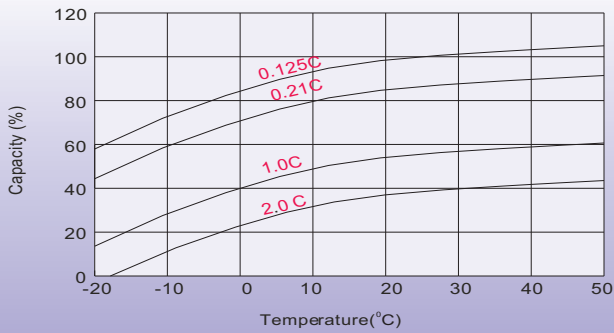
## Discharge Characteristics



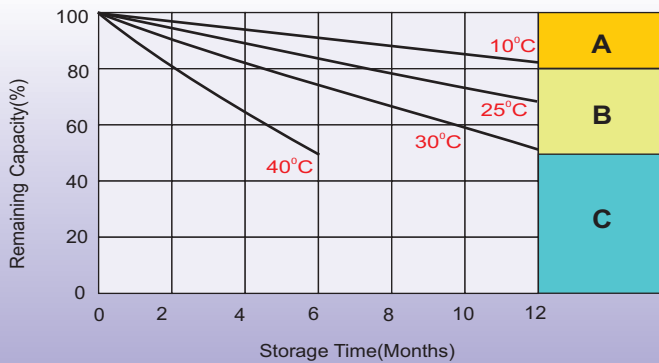
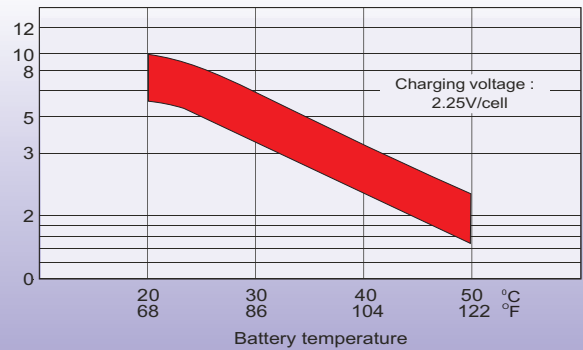
## Float Charging Characteristics



## Temperature Effects in Relation to Battery Capacity



## Effect of Temperature on Long Term Float Life



## Self Discharge Characteristics

- A** No supplementary charge required  
(Carry out supplementary charge before use if 100% capacity is required.)
- B** Supplementary charge required before use. Optional charging way as below:
  1. Charged for above 3 days at limited current 0.25CA and constant voltage 2.25V/cell.
  2. Charged for above 20 hours at limited current 0.25CA and constant voltage 2.45V/cell.
  3. Charged for 8-10 hours at limited current 0.05CA.
- C** Supplementary charge may often fail to recover the capacity.  
The battery should never be left standing till this is reached.

## Sales Office

### China sales office:

Add: 5th Floor, Xinbaohui Bldg., Nanhai Blvd.,  
Nanshan, Shenzhen, China. 518052  
Tel: +86-755-86036060 (100 lines)  
Fax: +86-755-26067269  
E-mail: export@leoch.com  
Http://www.leoch.com

### North America sales office:

Add: 19751 Descartes, Unit A,  
Foothill Ranch, CA 92610, USA  
Tel: 949-588-5853  
Fax: 949-588-5966  
E-mail: sales@leoch.us  
Http://www.leoch.us

### Europe sales office:

Add: La Campagna House, Main Road,  
Gloucester, GL2-8JH, United Kingdom  
Tel: +44(0) 1452 751016  
E-mail: Sales.Europe@leoch.com  
Http://www.leoch.com