

Specification

Nominal Voltage	12V	
Nominal Capacity(8HR)	100.0AH	
Dimension	Length	330 ± 3mm (12.99 inches)
	Width	173 ± 2mm (6.81 inches)
	Container Height	212 ± 2mm (8.35 inches)
	Total Height (with Terminal)	220 ± 2mm (8.66 inches)
Approx Weight	Approx 30.0 kg (66.2lbs)	
Terminal	T11	
Container Material	ABS	
Rated Capacity	102.0 AH/10.2A	(10hr, 1.80V/cell, 25°C/77°F)
	100.0 AH/12.5A	(8hr, 1.75V/cell, 25°C/77°F)
	89.0 AH/17.8A	(5hr, 1.75V/cell, 25°C/77°F)
	81.0 AH/27.0A	(3hr, 1.75V/cell, 25°C/77°F)
	65.7 AH/65.7A	(1hr, 1.60V/cell, 25°C/77°F)
Max. Discharge Current	1200A (5s)	
Internal Resistance	Approx 4.9mΩ	
Operating Temp. Range	Discharge	-15 ~ 50°C (5 ~ 122°F)
	Charge	0 ~ 40°C (32 ~ 104°F)
	Storage	-15 ~ 40°C (5 ~ 104°F)
Nominal Operating Temp. Range	25 ± 3°C (77 ± 5°F)	
Cycle Use	Initial Charging Current less than 30.0A. Voltage	
	14.4V ~ 15.0V at 25°C (77°F) Temp. Coefficient -30mV/°C	
Standby Use	No limit on Initial Charging Current Voltage	
	13.5V ~ 13.8V at 25°C (77°F) Temp. Coefficient -20mV/°C	
Capacity affected by Temperature	40°C (104°F)	103%
	25°C (77°F)	100%
	0°C (32°F)	86%
Self Discharge	Leoch LPX series batteries may be stored for up to 6 months at 25°C (77°F) and then a freshening charge is required. For higher temperatures the time interval will be shorter.	



Applications

- ◆ UPS (High rate)
- ◆ High power backup supply
- ◆ Emergency power supply
- ◆ Starting system
- ◆ Power tools
- ◆ Emergency lighting
- ◆ Electric starting



Constant Current Discharge (Amperes) at 25 °C (77°F)

F.V/Time	5min	10min	15min	20min	30min	45min	1h	2h	3h	4h	5h	6h	8h	10h	20h
1.85V/cell	191.7	147.8	124.8	109.1	81.0	61.7	50.8	31.9	24.6	19.7	16.2	14.0	11.6	9.61	5.36
1.80V/cell	257.3	188.9	150.8	129.0	95.6	71.8	56.9	34.8	26.5	21.0	17.3	15.0	12.3	10.2	5.42
1.75V/cell	290.1	207.5	164.7	138.7	99.2	74.5	59.5	36.1	27.0	21.5	17.8	15.4	12.5	10.3	5.47
1.70V/cell	319.4	226.2	175.9	145.8	103.3	77.5	61.4	37.5	27.8	22.1	18.3	15.7	12.7	10.4	5.57
1.65V/cell	352.2	244.1	187.0	154.9	108.9	79.4	63.5	38.6	28.9	22.8	18.8	16.1	12.9	10.6	5.64
1.60V/cell	388.5	265.0	200.0	165.0	115.0	82.8	65.7	39.8	29.8	23.6	19.4	16.4	13.0	10.7	5.67

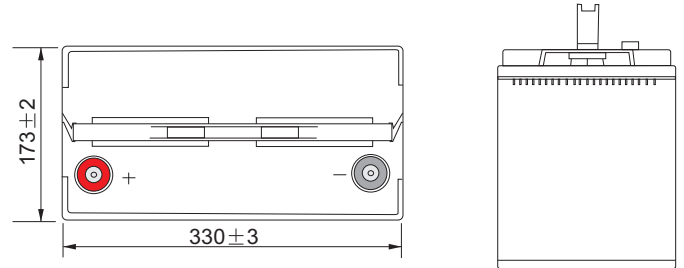
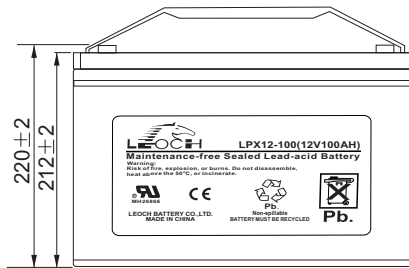
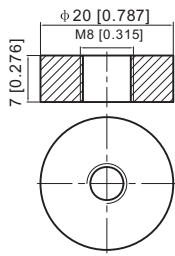
Constant Power Discharge (Watts) at 25 °C (77°F)

F.V/Time	5min	10min	15min	20min	30min	45min	1h	2h	3h	4h	5h	6h	8h	10h	20h
1.85V/cell	350.4	273.0	232.9	205.7	154.4	118.6	97.9	61.9	48.0	38.5	31.7	27.5	22.9	19.0	10.6
1.80V/cell	465.4	344.8	277.6	239.5	179.3	136.9	109.1	67.1	51.4	40.9	33.8	29.4	24.2	20.1	10.7
1.75V/cell	513.6	372.7	299.5	255.2	184.7	140.7	113.7	69.3	52.1	41.7	34.6	30.1	24.5	20.3	10.8
1.70V/cell	549.8	397.1	315.3	266.2	191.1	145.8	116.8	71.9	53.5	42.7	35.4	30.6	24.9	20.5	11.0
1.65V/cell	597.7	424.6	332.7	280.7	200.0	148.1	119.9	73.5	55.5	44.0	36.3	31.2	25.2	20.9	11.1
1.60V/cell	644.0	450.4	350.0	295.7	209.6	153.5	123.5	75.6	57.0	45.2	37.4	31.8	25.4	21.1	11.2

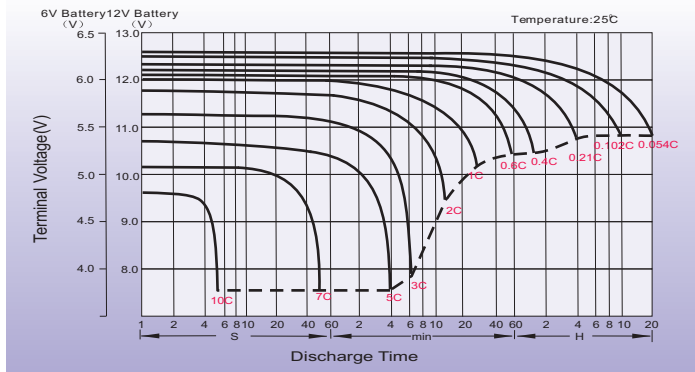
Dimensions

T11 Terminal

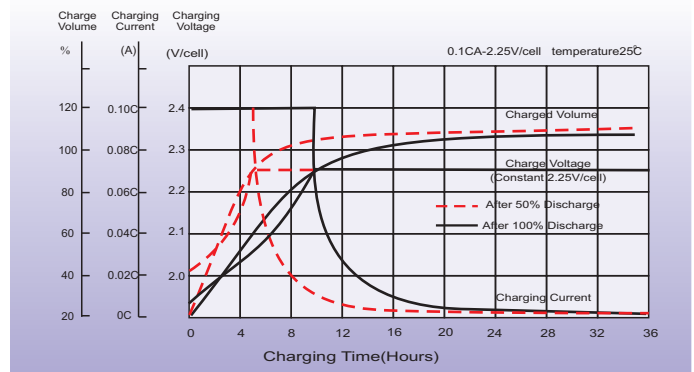
Unit: mm [inches]



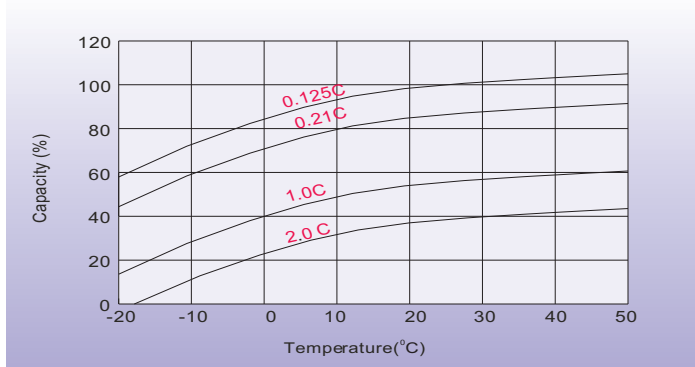
Discharge Characteristics



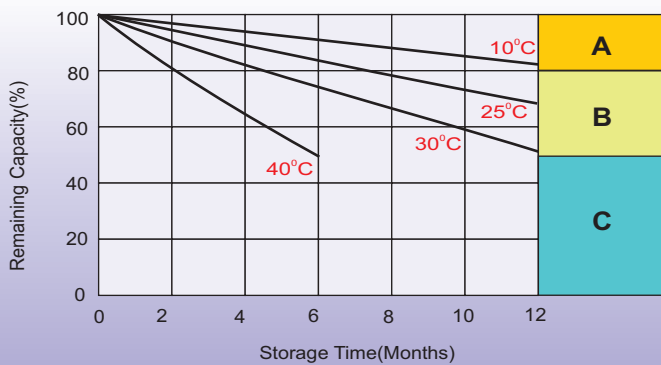
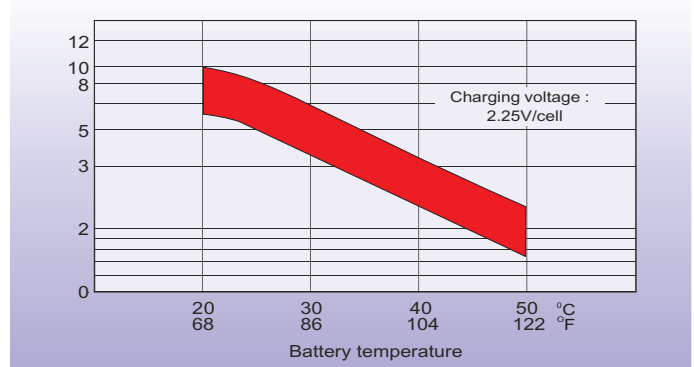
Float Charging Characteristics



Temperature Effects in Relation to Battery Capacity



Effect of Temperature on Long Term Float Life



Self Discharge Characteristics

- A** No supplementary charge required
(Carry out supplementary charge before use if 100% capacity is required.)
- B** Supplementary charge required before use. Optional charging way as below:
 1. Charged for above 3 days at limited current 0.25CA and constant voltage 2.25V/cell.
 2. Charged for above 20 hours at limited current 0.25CA and constant voltage 2.45V/cell.
 3. Charged for 8-10 hours at limited current 0.05CA.
- C** Supplementary charge may often fail to recover the capacity.
The battery should never be left standing till this is reached.

Sales Office

China sales office:

Add: 5th Floor, Xinbaohui Bldg., Nanhai Blvd.,
Nanshan, Shenzhen, China. 518052
Tel: +86-755-86036060 (100 lines)
Fax: +86-755-26067269
E-mail: export@leoch.com
Http://www.leoch.com

North America sales office:

Add: 19751 Descartes, Unit A,
Foothill Ranch, CA 92610, USA
Tel: 949-588-5853
Fax: 949-588-5966
E-mail: sales@leoch.us
Http://www.leoch.us

Europe sales office:

Add: La Campagna House, Main Road,
Gloucester, GL2-8JH, United Kingdom
Tel: +44(0) 1452 751016
E-mail: Sales.Europe@leoch.com
Http://www.leoch.com