

### Specification

Nominal Voltage	6V	
Nominal Capacity(8HR)	150.0AH	
Dimension	Length	260±1mm (10.2 inches)
	Width	180±1mm (7.09 inches)
	Container Height	247±1mm (9.72 inches)
	Total Height (with Terminal)	253±1mm (9.96 inches)
Approx Weight	Approx 21.2 kg (46.7lbs)	
Terminal	T7	
Container Material	ABS	
Rated Capacity	152.7 AH/15.27A	(10hr, 1.80V/cell, 25°C/77°F)
	150.0 AH/18.75A	(8hr, 1.75V/cell, 25°C/77°F)
	133.5 AH/26.7A	(5hr, 1.75V/cell, 25°C/77°F)
	121.5 AH/40.5A	(3hr, 1.75V/cell, 25°C/77°F)
	98.6 AH/98.6A	(1hr, 1.60V/cell, 25°C/77°F)
Max. Discharge Current	1500A (5s)	
Internal Resistance	Approx 3mΩ	
Operating Temp. Range	Discharge : -15~50°C (5~122°F)	
	Charge : 0~40°C (32~104°F)	
	Storage : -15~40°C (5~104°F)	
Nominal Operating Temp. Range	25±3°C (77±5°F)	
Cycle Use	Initial Charging Current less than 45.0A. Voltage	
	7.2V~7.5V at 25°C(77°F) Temp. Coefficient -15mV/°C	
Standby Use	No limit on Initial Charging Current Voltage	
	6.75V~6.9V at 25°C(77°F) Temp. Coefficient -10mV/°C	
Capacity affected by Temperature	40°C (104°F)	103%
	25°C (77°F)	100%
	0°C (32°F)	86%
Self Discharge	Leoch LPX series batteries may be stored for up to 6 months at 25°C(77°F) and then a freshening charge is required. For higher temperatures the time interval will be shorter.	



### Applications

- ◆ UPS (High rate)
- ◆ High power backup supply
- ◆ Emergency power supply
- ◆ Starting system
- ◆ Power tools
- ◆ Emergency lighting
- ◆ Electric starting



### Constant Current Discharge (Amperes) at 25 °C (77°F)

F.V/Time	5min	10min	15min	20min	30min	45min	1h	2h	3h	4h	5h	6h	8h	10h	20h
1.85V/cell	287.5	221.7	187.2	163.7	121.5	92.6	76.2	47.8	37.0	29.6	24.2	21.0	17.4	14.4	8.04
1.80V/cell	385.9	283.3	226.2	193.5	143.3	107.7	85.3	52.2	39.8	31.6	26.0	22.5	18.4	15.3	8.13
1.75V/cell	435.1	311.3	247.1	208.1	148.8	111.7	89.3	54.1	40.5	32.3	26.7	23.1	18.8	15.4	8.21
1.70V/cell	479.1	339.3	263.8	218.7	154.9	116.2	92.1	56.3	41.6	33.1	27.4	23.6	19.0	15.6	8.36
1.65V/cell	\	366.2	280.5	232.4	163.4	119.1	95.2	57.8	43.4	34.2	28.1	24.1	19.3	15.9	8.46
1.60V/cell	\	397.5	300.0	247.5	172.5	124.1	98.6	59.8	44.7	35.3	29.1	24.6	19.5	16.1	8.51

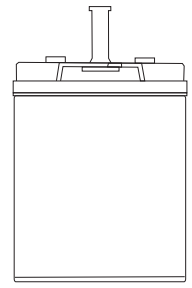
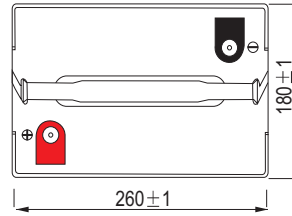
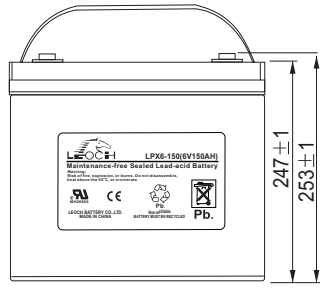
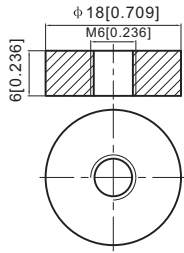
### Constant Power Discharge (Watts) at 25 °C (77°F)

F.V/Time	5min	10min	15min	20min	30min	45min	1h	2h	3h	4h	5h	6h	8h	10h	20h
1.85V/cell	525.6	409.5	349.4	308.5	231.6	177.9	146.9	92.8	72.0	57.8	47.5	41.2	34.3	28.5	15.93
1.80V/cell	698.1	517.1	416.4	359.3	269.0	205.3	163.7	100.6	77.1	61.4	50.8	44.0	36.3	30.2	16.08
1.75V/cell	770.3	559.1	449.3	382.8	277.0	211.1	170.5	104.0	78.2	62.5	51.9	45.1	36.8	30.4	16.21
1.70V/cell	824.8	595.6	473.0	399.3	286.7	218.7	175.3	107.9	80.2	64.0	53.1	46.0	37.3	30.7	16.50
1.65V/cell	\	636.9	499.1	421.0	300.0	222.1	179.9	110.2	83.3	66.0	54.4	46.8	37.8	31.3	16.68
1.60V/cell	\	675.7	524.9	443.6	314.5	230.3	185.3	113.4	85.4	67.9	56.1	47.7	38.1	31.6	16.75

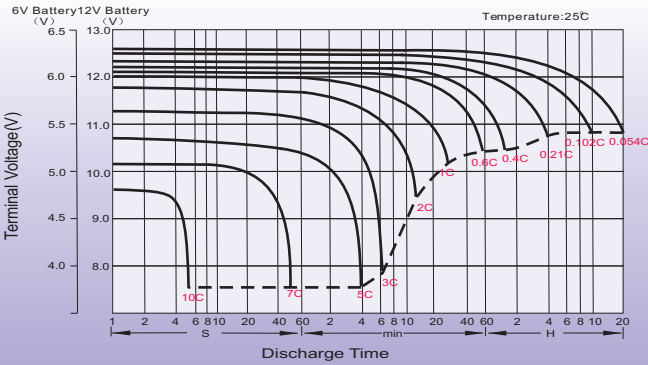
## Dimensions

### T7 Terminal

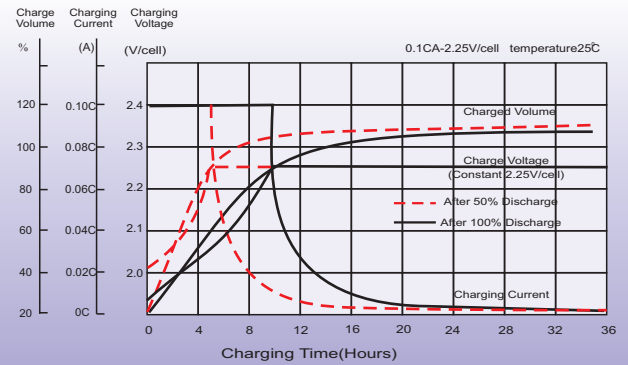
Unit: mm [inches]



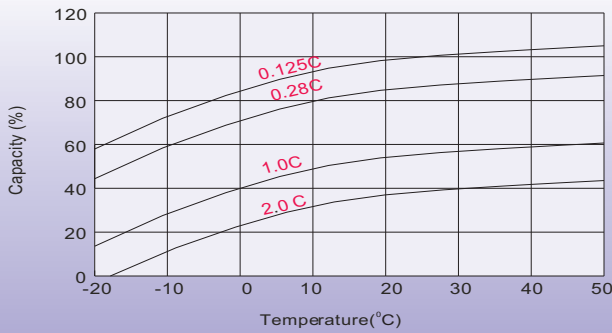
## Discharge Characteristics



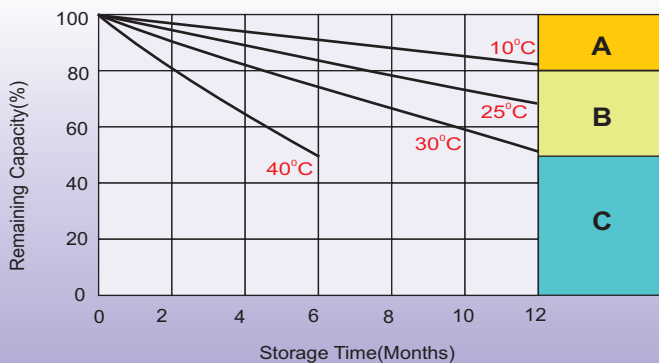
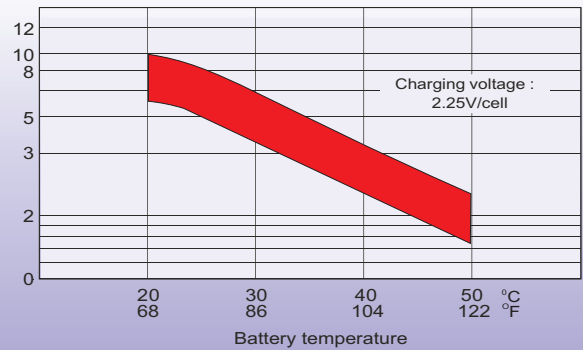
## Float Charging Characteristics



## Temperature Effects in Relation to Battery Capacity



## Effect of Temperature on Long Term Float Life



## Self Discharge Characteristics

- A** No supplementary charge required  
(Carry out supplementary charge before use if 100% capacity is required.)
- B** Supplementary charge required before use. Optional charging way as below:
  1. Charged for above 3 days at limited current 0.25CA and constant voltage 2.25V/cell.
  2. Charged for above 20 hours at limited current 0.25CA and constant voltage 2.45V/cell.
  3. Charged for 8-10 hours at limited current 0.05CA.
- C** Supplementary charge may often fail to recover the capacity.  
The battery should never be left standing till this is reached.

## Sales Office

### China sales office:

Add: 5th Floor, Xinbaohui Bldg., Nanhai Blvd.,  
Nanshan, Shenzhen, China. 518052  
Tel: +86-755-86036060 (100 lines)  
Fax: +86-755-26067269  
E-mail: export@leoch.com  
Http://www.leoch.com

### North America sales office:

Add: 19751 Descartes, Unit A,  
Foothill Ranch, CA 92610, USA  
Tel: 949-588-5853  
Fax: 949-588-5966  
E-mail: sales@leoch.us  
Http://www.leoch.us

### Europe sales office:

Add: La Campagna House, Main Road,  
Gloucester, GL2-8JH, United Kingdom  
Tel: +44(0) 1452 751016  
E-mail: Sales.Europe@leoch.com  
Http://www.leoch.com